

## **Historic, Archive Document**

Do not assume content reflects current scientific knowledge, policies, or practices.



62,23  
ESTABLISHED 1852.  
INCORPORATED 1890.

LIBRARY  
RECEIVED  
JUN 21 1923  
U.S. Department of Agriculture  
W. E. ROSSNEY, President.  
SIDNEY TUTTLE, Vice-President.

Spring  
of 1902

NUMBER 2  
87th EDITION



**ELECTRIC CARS**

pass the office and greenhouses between Bloomington and Normal every twenty minutes.

**OFFICE DURING  
THE PACKING  
S E A S O N**

At the Packing and Nursery Grounds at Normal, three blocks southeast of Normal passenger depot, or two blocks south of terminus of Bloomington and Normal Electric Street Railway.

**WHOLESALE  
CATALOGUE**

OF

TREES, PLANTS, SHRUBS,  
ROSES, BULBS, GREENHOUSE  
AND BEDDING PLANTS, etc.

OF THE

**PHOENIX  
NURSERY  
COMPANY**

**BLOOMINGTON  
ILLINOIS**



P. O. BOX 625.  
OFFICE AND GREENHOUSES  
1215 NORTH PARK STREET

OLD AND NEW TELEPHONES, No. 119.

600 ACRES.

13 GREENHOUSES.

# Spring, 1902.

IN presenting our trade list for the Spring of 1902, we wish to thank all our patrons for past favors, and we hope, by honorable dealing, to merit a continuance of their esteemed orders. The stock offered herein is all young and thrifty and graded to the highest standard. Our stock of Apple, Pear, Plum, Cherry, Peach, etc., is particularly fine; an unusually well-grown lot of small fruits in all lines. In Ornamental Trees, Evergreens, Shrubs, Roses, Herbaceous Plants and Greenhouse stock we have a large assortment of carefully grown stock.

All orders received by us have our personal and prompt attention, and we guarantee reasonable satisfaction in every case, as thousands of unsolicited testimonials now on file fully attest.

With our large storage cellars and packing houses, and system of water-works, distributing water to all parts of our packing grounds, we feel that our facilities for the careful and proper handling of nursery stock are very complete.

Notwithstanding our nurseries have been properly inspected by the State Entomologist, as will be seen by his certificate on last page of this catalogue, yet on account of the great prevalence of insect pests throughout the country, a sure remedy for which is Hydrocyanic Acid Gas, and having provided ourselves with buildings for this purpose, all our stock will be fumigated before shipment, and thus secure our customers against all danger on this point.

Our shipping facilities are unexcelled. Bloomington being an important railroad center, we are able to forward promptly to all sections. With the Illinois Central R. R., Chicago & Alton R. R., Lake Erie & Western R. R., and the C., C. & St. L. R. R. (Big Four), and their branches, we have direct communication with Chicago, St. Louis, Cincinnati, Kansas City, Indianapolis, Dubuque, Cairo and LaFayette by daily freight trains without transfer. On account of our unusual facilities we are also enabled to obtain very low freight rates to all points. We ship with flattering results to Australia, Mexico, New Zealand, Nova Scotia, Oregon, Washington, California, Maine, and all the other states in the Union.

We exercise the greatest care to have all articles true to name.

PHOENIX NURSERY COMPANY.

## TERMS AND CONDITIONS.

**Terms of Payment**—Cash, satisfactory security, or references before shipment of stock. All orders to be sent by express, "C. O. D." must be accompanied by ONE-FOURTH THE AMOUNT IN CASH.

Remit by Postal or Express Money Orders, Bank Drafts on New York, Chicago or St. Louis, payable to order of PHOENIX NURSERY COMPANY, or currency by express prepaid.

**Orders and Conditions of Sale**—Please order EARLY, with order legible and separate from body of letter, with name of Postoffice, County and State, and how you wish packages directed on the ORDER.

Long specified lists are subject to special prices. Needed specifications as to age, size, style, etc., state on the order, to save the trouble of referring to previous correspondence.

Particular varieties named in order furnished as far as practicable. Orders forbidding substitution we fill so far only as we can supply the sorts specified.

**Prices**—All articles listed in this catalogue will be furnished to the trade at prices quoted, regardless of quantity ordered; except where items are quoted by the 1,000, not less than 500 will be furnished at 1,000 rates.

**Packing**—Prices do not include packing. Packing carefully done in boxes mostly, sometimes in bales or parcels, for which we charge moderately; for large boxes, 8 or 9 feet by 2½, three of which usually hold 1,000 5 to 6-foot apple—\$2.50 each, and in proportion for larger or smaller boxes. NO CHARGE FOR DELIVERING AT RAILROAD, EXPRESS, OR POSTOFFICE, HERE. On lots by mail, postage and packing extra. Trees per carload, when loaded in bulk in box cars, no additional charge for loading and packing in car. When flat cars are used and boarded up, we charge for additional labor, lumber and material used.

**Shipping**—We usually commence shipping in the Spring about March 10.

We prefer parties ordering should indicate the route by which they wish stock sent. In absence of particular directions, we forward to the best of our judgment; but in no case do we assume any responsibility after consignment to purchaser, unless for our own mistakes. When losses occur by detention en route, claims should be made on the carriers immediately.

It is our custom, when sufficient time is given, to obtain through Freight or Express Rates on all Shipments.

To our customers at a distance we would state that the postal rate on Trees and Plants has been reduced from 16 cents to 8 cents per pound, and can be shipped in any number of four-pound packages to one address. We ship a great many root grafts, seedlings, cions, greenhouse plants, etc., in this way.

Direct all letters to PHOENIX NURSERY COMPANY, P. O. BOX 625, BLOOMINGTON, ILLINOIS.





# PHOENIX NURSERY COMPANY

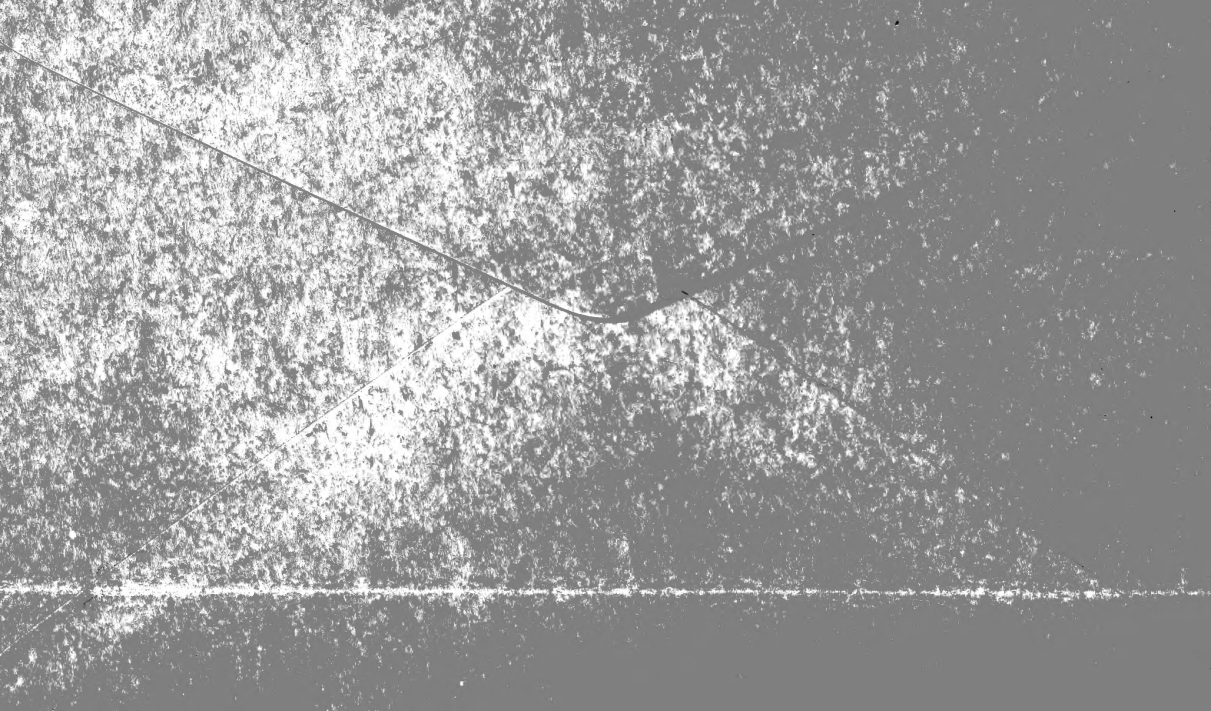
Props. Bloomington Phoenix Nursery,

BLOOMINGTON

ILLINOIS.

P. O. Box 625.







## FRUIT DEPARTMENT.

For complete list of varieties, with description, see General Descriptive Catalogue. Except mentioned, prices are for first-class stock.

	100	1000
<b>APPLE—STANDARD</b> , 3 to 4 feet, 2 years.....	\$ 3.50	\$95.00
“ “ 4 to 5 feet, ½ to ¾ inch, 2 years.....	5.00	40.00
“ “ 5 to 6 feet, ¾ to 1 inch, 2 and 3 years.....	7.00	55.00
“ “ 5 to 7 feet, ¾ inch and up, 2 and 3 years.....	10.00	80.00
<b>CRAB</b> , 4 to 5 feet, ½ to ¾ inch, 2 years.....	6.00	50.00
“ “ 5 to 6 feet, ¾ to 1 inch, 2 years.....	8.00	70.00
“ “ 5 to 7 feet, ¾ inch and up, 2 years.....	10.00	90.00
<b>DELAWARE RED WINTER</b> —3 to 4 feet, 2 years.....	5.00	.....
“ “ “ “ 4 to 5 feet, “.....	7.00	.....
“ “ “ “ 5 to 6 feet, “.....	9.00	.....
<b>WINTER BANANA</b> —This valuable new variety originated on the farm of D. M. Flory, Cass Co., Ind., and was introduced several years since by us. Fruit large, unusually handsome. Quality excellent; of exquisite flavor and a good keeper. Tree hardy and a prolific bearer, 3 to 4 feet, 2 years.....	8.00	.....
“ 4 to 5 feet, ½ to ¾ inch, 2 years.....	10.00	.....
“ 5 to 6 feet, ¾ to 1 inch, “.....	12.00	.....
“ 5 to 7 feet, ¾ inch and up, “.....	15.00	.....
<b>BISMARCK</b> —The wonderful new dwarf apple. Bears at a very early age, unusually productive, fruit large, 3 years, 3 to 4 feet.....	18.00	.....
“ <b>DWARF</b> —Ben Davis, Baldwin, Duchess of Oldenburg, Maiden's Blush, Wealthy, Wolf River, Yellow Transparent, 2 to 3 feet.....	12.00	.....
“ “ “ “ 3 to 4 feet.....	15.00	.....

☞ We have a very nice lot of apples, 2 years, 2 to 3 feet, in general assortment. They are a bargain. Price, per 100, \$2.00; per 1000, \$15.00.

### Leading Sorts of Standard Apple Trees.

**Summer**—Astrachan Red, Benoni, Caroline Red June, Cole's Quince, Duchess of Oldenburg, Early Harvest, Early Joe, Early Red Streak, Early Pennock, Early Pound Royal, Golden Sweet, Keswick Codlin, Sops of Wine, Summer Belle, Sweet June, Yellow May, Yellow Horse, Yellow Transparent, etc.

**Autumn**—Alexander, Autumn Strawberry, Bailey's Sweet, Buckingham or Fall Queen, Carter's Blue, Colvert, Chenango Strawberry, Fall Orange, Fall Pippin, Fall Stripe, Fall Wine Sap, Fameuse, Fulton, Gravenstein, Haas Queen, Hubbardson's Nonesuch, Jersey Sweet, Lowell, Maiden's Blush, Porter, Rambo, Ramsdell's Sweet, Smokehouse, Stannard, Sweet Pear, Sweet Russet, Twenty Ounce, Wealthy, etc.

**Winter**—Arkansas Black, Baldwin, Ben Davis, Belleflower Yellow, Belle de Boskoop, Baird, Carthouse or Little Romanite, Clayton, Detroit Red, Delaware Red Winter, English Golden Russet, Fallwater, Flora Bell, Grime's Golden Pippin, Gano, Huntsman's Favorite, Hawley, Hibernial, Ingram, Isham's Sweet, Iowa Blush, Janet, Jonathan, Kentucky Red Streak, King of Tompkin's Co., Limber Twig, Lawyer, Longfield, Mann, Milam, Minkler, Missouri Pippin, Missouri Superior, McIntosh Red, McMahan's White, Mammoth Black Twig, Northwestern Greening, Nickajack, Northern Spy, Newtown Spitzenburg, Pryor's Red, Price's Sweet, Pewaukee, Red Beitigheimer, Rome Beauty, Roxbury Russet, Rhode Island Greening, Rock Pippin, Roman Stem, Seek-no-Further, Shockley, Salome, Sutton Beauty, Smith's Cider, Striped Sweet Pippin, Starke, St. Lawrence, Striped Vandevere Pippin, Talman Sweet, Utter's Large Red, Walbridge, Wagner, White Winter Pearmain, White Pippin, Wine Sap, Willow Twig, Wolf River, Yates, York Imperial, etc.

**Crab**—Alaska, Gen. Grant, Gideon's No. 4, Golden Beauty, Hyslop, Irish Peach, Martha, Minnesota, Northfield Beauty, Orange, Quaker Beauty, Red Siberian, Tetofsky, Transcendent, Whitney's No. 20, White Arctic, Yellow Siberian, etc.

	100	1000
<b>PEAR—STANDARD</b> —8 to 10 feet, bearing size.....	\$20.00	.....
“ “ Extra quality, 5 to 7 feet, ¾ inch and up, leading varieties.....	14.00	\$125.00
“ “ First quality, 5 to 6 feet, ¾ to 1 inch, leading varieties.....	12.00	100.00
“ “ 4 to 5 feet, branched, nice trees. Varieties: Bartlett, Clapp's Favorite, Flemish Beauty and Howell.....	9.00	75.00
“ “ 3 to 4 feet, mostly branched, Bartlett and Clapp's Favorite.....	6.00	50.00
“ “ <b>LINCOLN</b> , tree "hardy as an oak;" fruit large, golden yellow, good quality; September, 3 to 5 feet.....	20.00	.....
“ “ <b>KEIFFER'S HYBRID</b> , extra quality, 5 to 7 feet, ¾ inch and up.....	14.00	120.00
“ “ “ First quality, 5 to 6 feet, ¾ to 1 inch.....	12.00	90.00
“ “ “ Medium, 4 to 5 feet, ½ to ¾ inch.....	9.00	.....
“ “ “ Branched, 3 to 4 feet.....	7.00	.....
“ “ “ Whips, 2 to 3 feet.....	3.50	30.00
“ “ <b>LONGWORTH'S NO. 1</b> , 5 to 7 feet (See description on page 4).....	25.00	.....
“ “ “ 4 to 6 feet.....	20.00	.....
“ “ “ 3 to 4 feet.....	15.00	.....
“ “ “ 2 to 3 feet, whips.....	10.00	.....

## PEAR—Continued.

	100	1000
PEAR—STANDARD—ROSSNEY, 5 to 7 feet, first-class, $\frac{3}{4}$ inch and up.....	\$25.00	.....
“ “ “ “ “ 4 to 6 feet, $\frac{5}{8}$ to $\frac{3}{4}$ inch (See description below) .....	20.00	.....
“ DWARF—3 to 4 feet, $\frac{3}{4}$ inch and up, leading varieties .....	8.00	\$75.00
“ “ “ 2 to 3 feet, $\frac{5}{8}$ to $\frac{3}{4}$ inch, leading varieties .....	7.00	65.00
“ “ “ 2 to 3 feet, $\frac{1}{2}$ to $\frac{3}{8}$ inch, leading varieties.....	6.00	50.00

## The Following are Our Leading Sorts of Standard Pears:

BARTLETT, BELLE LUCRATIVE, BESSEMIANKI, BEURRE BOSC, BEURRE CLAIRGEAU, BEURRE EASTER, BEURRE D'ANJOU, BUFFUM, CLAPP'S FAVORITE, DOYENNE BOUSSOCK, DUCHESS D'ANGOULEME, DOYENNE DE ETE, EARLY HARVEST, FREDERICK CLAPP, FLEMISH BEAUTY, GARBER'S HYBRID, GOODALE, HOWELL, KOONCE, LOUISE BONNE D'JERSEY, LAWRENCE, LAWSON, LE CONTE, MT. VERNON, ONONDAGA, OSBAND'S SUMMER, PETITE MARGUERITE, PRESIDENT DROUARD, SHELDON, SECKEL, TYSON, VERMONT BEAUTY, VICAR OF WINKFIELD, WASHINGTON EARLY, WILDER'S EARLY, etc.

## The Following are Our Leading Sorts of Dwarf Pears:

BARTLETT, BEURRE D'ANJOU, BUFFUM, CLAPP'S FAVORITE, DUCHESS D'ANGOULEME, EARLY HARVEST, HOWELL, IDAHO, KEIFFER'S HYBRID, KOONCE, LAWRENCE, LOUISE BONNE D'JERSEY, MT. VERNON, SECKEL, TYSON, VICAR OF WINKFIELD, WILDER'S EARLY, etc.

## ROSSNEY PEAR.

The best and handsomest pear yet produced. Hardy and productive. Ripens two weeks after Bartlett. Strong grower. Luther Burbank, the most noted horticulturist of the age, says under date of October 5, 1895: "The samples of Rossney Pear arrived in due season. The large size, handsome form, and creamy yellow skin with crimson blush gives the fruit a tempting appearance; and the tender, creamy flesh, of just the right texture, with no hard spots and an unusually small core, with its superior flavor, makes it about the best pear so far seen. If the tree is vigorous, healthy and productive, would prefer it to any other, even the standards, Bartlett or Seckel." See price above.

## LONGWORTH'S No. 1 PEAR.

## The Pear for the Northwest.

This is a very hardy Seedling Pear of recent introduction; originated at Dubuque, Iowa, and was grown from seed some forty years since by the veteran nurseryman and horticulturist, Wm. Longworth. The tree is a strong, upright grower, entirely FREE FROM BLIGHT, and an enormous bearer. Fruit, medium to large, nearly round; skin yellow with warm blush on the sunny side; flesh rather coarse, juicy, sugary, good flavor. Ripens from first to middle of September.

Having thoroughly tested this variety, we have no hesitancy in recommending it to the public for general planting. This pear has withstood our severest winters without the slightest injury, while other varieties were frozen to the ground. Being free from blight and EXTREMELY HARDY, it is a very desirable variety, and should be planted largely. See price, page 3.

	100	1000
PLUM—On Plum, European Varieties, 5 to 7 feet, $\frac{3}{4}$ in and up.....	\$14.00	\$125.00
“ “ “ “ “ 5 to 6 feet, $\frac{5}{8}$ to $\frac{3}{4}$ in.....	12.00	100.00
“ “ “ “ “ 3 to 4 feet, $\frac{1}{2}$ to $\frac{5}{8}$ in.....	8.00	70.00

Varieties—BEAUTY OF NAPLES, BRADSHAW, BUNKER HILL, GERMAN PRUNE, JEFFERSON, IMPERIAL GAGE, GEUII, LOMBARD, MOORE'S ARCTIC, NIAGARA, QUACKENBOSS, POND'S SEEDLING, REINE CLAUDE, RED EGG, SHIPPER'S PRIDE, SARATOGA, SHROPSHIRE DAMSON, SMITHS' ORLEANS, UNION PURPLE, WASHINGTON, YELLOW EGG, etc.

	100	1000
PLUM—On Plum, Native Varieties, 5 to 7 feet, $\frac{3}{4}$ in and up.....	\$18.00	.....
“ “ “ “ “ 4 to 6 feet, $\frac{5}{8}$ to $\frac{3}{4}$ inch.....	16.00	.....
“ “ “ “ “ 3 to 4 feet, $\frac{1}{2}$ to $\frac{5}{8}$ inch.....	12.00	.....

Varieties—DE SOTO, CHENEY, FOREST GARDEN, HAWKEYE, POTTAWATTOMIE, PRUNUS SIMONI, ROBINSON, WEAVER, WOLF, WILD GOOSE, WYANT, etc.

	100	1000
PLUM—On Plum, Japanese Varieties, 5 to 7 feet, $\frac{3}{4}$ inch and up .....	\$14.00	\$125.00
“ “ “ “ “ 4 to 6 feet, $\frac{5}{8}$ to $\frac{3}{4}$ inch.....	10.00	90.00
“ “ “ “ “ 3 to 4 feet, $\frac{1}{2}$ to $\frac{5}{8}$ inch.....	7.00	60.00

Varieties—ABUNDANCE, AMERICA, BURBANK, BOTAN, CHALCO, CLIMAX, OGON, RED JUNE, SATSUMA, SHIRO, SULTAN, WICKSON, WILLARD, etc.

	100	1000
CHERRY—EARLY RICHMOND, 6 to 7 feet 1 inch and up, very fine, 2 years.....	\$30.00	\$275.00
“ “ “ “ “ 5 to 6 feet, $\frac{3}{4}$ inch and up, 2 years .....	25.00	240.00
“ “ “ “ “ 4 to 5 feet, $\frac{5}{8}$ to $\frac{3}{4}$ inch, 2 years.....	20.00	190.00
“ “ “ “ “ 3 to 4 feet, branched, 2 years.....	15.00	140.00

**CHERRY—Continued.**

	100	1000
<b>CHERRY—ASSORTED</b> , 5 to 6 feet, 3/4 inch and up, 2 years .....	\$25.00	\$240.00
“ “ 4 to 5 feet, 5/8 to 3/4 inch, 2 years .....	20.00	190.00
“ “ 3 to 4 feet, branched, 2 years .....	15.00	140.00
“ <b>NEW WONDERFUL DWARF</b> , 3 to 4 feet.....	10.00	.....
“ “ “ “ 4 to 6 feet.....	12.00	.....

**Leading Sorts of Cherry:**

**Sour Varieties**—Early Richmond, English Morello, May Duke, Belle de Choisey, Reine Hortense, Montmorency, Nelson's Kentish, Royal Duke, Olivet, Late Duke, Wragg, Northwest, Louis Phillippe, Ostheim, Dye House, etc.

**Sweet Varieties**—Black Tartarian, Gov. Wood, Yellow Spanish, Rockport Bigarreau, Early Purple Guigne, Windsor, Napoleon Bigarreau, Luelling, Schmidt's Bigarreau, etc.

☞ We have an unusually fine lot of Early Richmond Cherry.

	100	1000
<b>PEACH</b> —4 to 6 feet, first class, very fine, 1 year.....	\$ 8.00	\$75.00
“ 3 to 4 feet, 1 year.....	6.00	50.00
“ 2 to 3 feet, 1 year.....	4.00	30.00
“ Van Buren's Golden Dwarf, first class.....	20.00	.....
“ Blood-leaved, very ornamental, excellent for pickling, 4 to 6 feet.....	10.00	.....
“ “ “ “ 3 to 4 feet.....	8.00	.....
“ “ “ “ 2 to 3 feet.....	5.00	.....
“ <b>WORLD'S FAIR</b> —The tree is hardy and vigorous. Fruit very large, roundish and handsome; color deep red in the sun, softening to yellowish ground in shade; juicy and of most excellent flavor. Ripens from 10th to 15th of June, 4 to 6 feet.....	10.00	.....
“ “ 3 to 4 feet.....	8.00	.....
“ “ 2 to 3 feet.....	6.00	.....

**Leading Sorts of Peaches from Our List:**

Alexander, Amsden, Bokara No. 3, Beer's Smock, Brandywine, Bronson, Champion, China Cling, Chair's Choice, Clarissa, Conkling, Crosby, Early Barnard, Early Canada, Early Crawford, Engle's Mammoth, Early Rivers, Early York, Elberta, Fitzgerald, Ford's Late, Foster, Gray Rareripe, Greensboro, Globe, Gold Drop, Heath Cling, Hill's Chill, Hynes Surprise, Indian Blood Cling, Jacque's Rareripe, Kalamazoo, Late Crawford, Lemon Cling, Michigan Early, Marshall's Late, Mt. Rose, Morris White, Muir, Old Mixon Cling, Old Mixon Free, Red Cheek Melacoton, Reeve's Favorite, Salway, Shoemaker, Smock, Sneed, Sener, Steven's Rareripe, Susquehanna, Stump The World, Triumph, Wager, Washington Cling, Waterloo, Wheatland, Wonderful, Yellow Rareripe, Yellow St. John, etc.

	100	1000
<b>APRICOT</b> —Russian and European, 4 to 6 feet.....	\$10.00	\$80.00
“ “ “ “ 3 to 4 feet.....	8.00	70.00
“ “ “ “ 2 to 3 feet.....	5.00	40.00

Varieties of Apricots: Blenheim, Breda, Early Golden, Moorpark and Royal.  
Russian varieties: Alexis, Alexander, Catherine, Gibb, Budd and Nicholas.

	100	1000
<b>NECTARINE</b> —4 to 6 feet.....	\$10.00	.....
“ 3 to 4 feet.....	8.00	.....
“ 2 to 3 feet.....	5.00	.....

Varieties of Nectarines: Elruge, Hunt's Tawney, Pitmaston Orange, Stanwick, Early Violet.

	100	1000
<b>QUINCE</b> —Orange, Champion and Meeche's Prolific, 3 to 4 feet.....	\$12.00	.....
“ “ “ “ “ 4 to 5 feet.....	15.00	.....

**MISCELLANEOUS.**

	100	1000
<b>ALMOND</b> —Hard-shell and soft-shell, 4 to 6 feet.....	\$12.00	.....
“ “ “ “ “ 3 to 4 feet.....	10.00	.....
“ “ “ “ “ 2 to 3 feet.....	6.00	.....
<b>DEWBERRY</b> —LUCRETIA, Best of all Dewberries. The most valuable small fruit introduced in many years, 1 year.....	2.00	\$10.00
<b>JUNEBERRY</b> —DWARF, Shad bush. Edible fruit 2 to 3 feet.....	5.00	.....
<b>MULBERRY</b> —Downing's Everbearing and Hicks, 4 to 6 feet.....	20.00	.....
“ White, 2 years, transplanted, 3 to 4 feet.....	6.00	.....
“ “ “ “ 4 to 6 feet.....	8.00	.....
“ Black “ “ 4 to 6 feet.....	10.00	.....
“ “ “ “ 3 to 4 feet.....	7.00	.....
“ Russian transplanted, 3 to 4 feet.....	4.00	.....
“ “ “ “ 4 to 6 feet.....	6.00	.....
<b>PAWPAW</b> —Northern Banana, 4 to 6 feet.....	10.00	.....

**MISCELLANEOUS—Continued.**

	100	1000
<b>PERSIMMON</b> —Native, 2 years, 18 to 24 inches, transplanted.....	\$ 2 50	.....
“ “ “ 4 to 6 feet, “ .....	10.00	.....
<b>HUCKLEBERRY</b> —Well known, hardy and productive, 2 to 3 feet.....	3.00	\$25.00
<b>CHERRY</b> —Dakota Sand, 4 to 5 feet.....	12.00	.....
“ Wild Black. See Ornamental Trees.....		

**CURRENTS.**

	100	1000
<b>Black Naples</b> —Best black, 2 years.....	\$2.00	.....
<b>Cherry</b> —2 years, reliable, well known, red.....	3.00	\$25.00
<b>Fay's Prolific</b> —2 years, new red, surpasses all other varieties in general good qualities.....	2.50	20.00
“ “ 1 year.....	2.00	15.00
<b>Knight's Large Red</b> —2 years.....	2.50	.....
“ “ 1 year.....	2.00	15.00
<b>Long Bunch Holland</b> —2 years, the most popular red variety.....	2.50	20.00
<b>North Star</b> —New red, 2 years.....	2.50	20.00
<b>Pomona</b> —New red—Very productive, now being planted largely by fruit growers, 2 years....	4.00	.....
<b>Red Dutch</b> —2 years.....	2.50	.....
<b>Versailles</b> —2 years, well known, red.....	3.00	25.00
<b>Victoria</b> —Large, bright red; productive, 2 years.....	2 50	.....
<b>White Dutch</b> —2 years.....	2.00	12.50
“ “ 1 year.....	1.50	10.00
<b>White Grape</b> —2 years.....	2.50	20.00
“ “ 1 year.....	2.00	15.00

**GOOSEBERRIES.****Magnificent stock of strong young plants.**

	100	1000
<b>Downing's Seedling</b> —2 years, strong plants.....	\$ 3.00	\$25.00
<b>Keepsake, Crown Bob and White Smith</b> —Choice English, 2 years.....	12.00	.....
<b>Cluster</b> —2 years.....	3.00	20.00
<b>Houghton</b> —2 years.....	2.00	15.00
<b>Industry</b> —New, English sort, large size, hardy, prolific, 2 years.....	10.00	.....
<b>Pearl</b> —New, from Canada, free from mildew, large, very prolific. Strong grower, 2 years....	3.00	.....
<b>Red Jacket (Josselyn)</b> —The best American red variety yet produced. Fruit large and of good quality, free from mildew, 2 years.....	8.00	60.00

**BLACKBERRIES.**

	100	1000
<b>Mersereau</b> —This early Mammoth ironclad blackberry originated in Northwestern New York, where the mercury falls from 15 to 25 degrees below zero, and where it has stood in open field culture for a great many years without the slightest protection and has never been injured. It has proved hardy here, very prolific, and the fruit is large, sweet, and of good color. We consider it superior to Snyder, our standard here in the West. It is hardy and quite as prolific as Snyder, and the fruit is much larger and better. Unsurpassed as a keeper and shipper.....	\$ 3.00	\$20.00
<b>Kittatinny</b> —grown from root cuttings.....	1.50	10.00
<b>Lawton</b> —grown from root cuttings.....	2.00	12.00
<b>Snyder</b> —The berry of the West. Strong grower, very hardy, very productive. Never fails to bear a full crop; seven acres yielded 43,000 quarts. First class.....	1.00	7.00
<b>Early Harvest</b> —grown from cuttings.....	1.50	10.00
<b>Taylor's Prolific</b> —grown from root cuttings.....	1.50	10.00
<b>Stone's Hardy</b> —grown from root cuttings.....	1.50	10.00
<b>Erie</b> —Very large and very early. Prolific.....	2.00	15.00
<b>Eldorado</b> —Among the good points of this valuable new blackberry are great productiveness, hardiness, extra fine quality and sweetness of flavor; without core. The berries are large, jet black, borne in clusters and ripen well together. Sweet, melting, rich and pleasant to the taste. From all indications it is one of the best blackberries grown.....	2.00	.....

**DEWBERRIES.**

	100	1000
<b>Lucretia Dewberry</b> —Best of all.....	\$ 2.00	\$10.00

**STRAWBERRIES.**

	100	1000
<b>Barton's Eclipse</b> —New, large, very productive.....	\$ .50	\$3.50
<b>Brandywine</b> —This is the handsomest berry grown. Fancy market variety of fine rich flavor and large size. It is dark red to the center.....	.50	3.50
<b>Bedar Wood</b> —Most productive. Considered the very best early variety.....	.50	3.50
<b>Bubach's No. 5</b> —Very strong, vigorous, and exceedingly stocky.....	.50	3.50
<b>Captain Jack</b> —Vigorous, hardy, very early.....	.50	3.50
<b>Crescent Seedling</b> —Celebrated, wonderful bearer.....	.50	3.00
<b>Chas. Downing</b> —Old reliable, one of the best.....	.50	3.50
<b>Clyde</b> —New. Abundant bearer, fruit large. Strong grower, succeeds everywhere.....	.50	4.00
<b>Enhance</b> —Very productive, well tested and satisfactory.....	.50	3.50
<b>Haviland Seedling</b> —Said to be the earliest large berry yet produced.....	.50	3.50
<b>Jessie</b> —From Wisconsin. It has no defects worth naming.....	.50	3.00
<b>Manchester</b> —Vigorous, enormously productive, fruit large, firm, late.....	.50	3.50
<b>SENATOR DUNLAP</b> —Originated 1900, by Rev. J. R. Reasoner, Champaign County, Illinois. Is in bearing here and has given the greatest satisfaction as to hardiness, productiveness and quality. Blossoms perfect. Fruit generally large, bright, or slightly dark red, very glossy, firm, a splendid keeper and shipper, and one of the best canning berries. Of the Warfield type.....	.75	6.00
<b>Splendid</b> —From Northern Illinois. The best berry for home market and table use yet produced. Better and larger than Crescent and ripens one week earlier. Berries even in size, all ripening about the same time. Very prolific. Flavor excellent. Self-fertilizer.....	.50	3.50
<b>Sharpless Seedling</b> —Largest, most productive of all strawberries.....	.50	3.50
<b>Timbrell</b> —Berries large to very large, dark crimson. Very firm, good shipper, plant strong and healthy. Very prolific.....	.50	3.50
<b>Warfield's No. 2</b> —Most highly esteemed for its large, uniform size and good shipping qualities.....	.50	3.00
<b>Wilson's Albany</b> —Enormous bearer, reliable.....	.50	3.50

**RASPBERRIES.**

	100	1000
<b>Cuthbert</b> —One of the best, most profitable berries for general planting; upright, very hardy, prolific; fruit brilliant red, juicy, excellent quality.....	\$ .50	\$ 4.00
<b>Columbian</b> —New—Deep purplish red, sweet and highly flavored; extra strong canes, wonderfully productive. Berry large.....	2.00	15.00
<b>Earhart's Everbearing</b> —Black Cap—best everbearing.....	2.50	.....
<b>Early Ohio</b> —Black Cap.....	1.00	7.50
<b>Eureka</b> —Very early and productive: fruit large strong grower. Hardy; an excellent market variety.....	1.00	9.00
<b>Gregg</b> —RELIABLE, hardy, the very largest and most productive Black Cap.....	1.00	7.50
<b>Golden Queen</b> —The best yellow raspberry yet introduced; vigorous, hardy, and remarkably productive; upright.....	1.25	10.00
<b>Hilborn</b> —New, Black Cap, superior quality, fruit large; very hardy; originated in Canada.....	1.00	7.50
<b>Kansas</b> —New; ripens just after Souhegan; berry as large or larger than the Gregg. Very vigorous and productive; tips.....	1.00	7.50
<b>Loudon</b> —The best red raspberry yet introduced and the most productive. Large size, bright color, very hardy, good shipper.....	1.50	10.00
<b>Mammoth Cluster</b> —Old and reliable, large Black Cap, tips.....	1.00	7.50
<b>Miller</b> —New, red, large and very productive.....	.75	7.00
<b>Nemcha</b> —New, Black Cap, very hardy, ripens with Gregg and resembles it in fruit.....	1.00	7.50
<b>Older</b> —Very hardy, vigorous and productive. Berries sweet and rich, of large size; jet black; ripens before Gregg.....	1.00	7.50
<b>Shaffer's Colossal</b> —New, purple, large, very productive, tips.....	1.50	10.00
<b>Souhegan</b> —Early, Black Cap, very productive.....	1.00	7.50
<b>Turner</b> —Upright, almost thornless, vigorous, red, bears 125 to 150 bushels to the acre.....	.50	4.00
<b>Tyler</b> —Black Cap, early.....	1.00	7.50

**GRAPES.**

	100	1000
<b>Agawam</b> —(Rogers No. 15) 2 years, old reliable, large, red, one of the very best.....	\$ 4.00	.....
<b>Blood's Black</b> —Very early, 2 years.....	8.00	.....
<b>Brighton</b> —2 years; hardy, productive, exquisite flavor, resembling Catawba in color.....	5.00	.....
<b>Campbell's Early</b> —New, hardy and vigorous, very prolific, berry large, flavor rich and sweet. Flesh firm but tender. Very early; 2 years.....	8.00	.....
<b>Catawba</b> —Late red, 2 years.....	4.00	.....
<b>Champion or Talman</b> —Early black, 2 years.....	4.00	.....
<b>Christine</b> —(Telegraph) early, hardy, black, 2 years.....	6.00	.....
<b>Clinton</b> —2 years.....	4.00	.....

## GRAPES—Continued.

	100	1000
Concord—2 years.....	\$ 3.00	\$25.00
Cottage—Seedling of Concord. Sweeter and earlier; 2 years.....	4.00	.....
Delaware—2 years.....	5.00	.....
Diana—2 years.....	7.00	.....
Dracut Amber—Large, early, brown, 2 years.....	7.00	.....
Duchess—A new seedling, white grape, 2 years.....	7.00	.....
Early Victor—2 years.....	8.00	.....
Elvira—White, productive, 2 years.....	3.50	.....
Empire State—White, 2 years.....	6.00	.....
Eaton—A large, showy black grape; ripens before Concord, 2 years.....	8.00	.....
Hartford Prolific—2 years.....	4.00	.....
Herman—Black, wine grape, 2 years.....	8.00	.....
HERCULES—This new black grape which originated in this county was first offered by us. The vine is a strong, healthy grower, hardy and productive; bunch large, long and broad; berries unusually large and round; a shade darker than Worden and covered with a blue bloom; ripens with Concord. The fruit of this variety was exhibited at the World's Fair, 1893, by the New York Experimental Station, where it created a great deal of interest. 2 years.....	25.00	.....
ILLINOIS EARLY—A new grape which originated with the late G. A. Ensenberger, of this city, some ten years ago. The vine is very hardy, strong grower. Fruit large, purplish black, ripens with Moore's Early. Berry adheres well to the stem, and we believe will make an excellent shipping variety. 2 years.....	25.00	.....
Isabella—2 years.....	5.00	.....
Ives' Seedling—Early, 2 years.....	3.50	.....
Janesville—Very early, hardy, productive, 2 years.....	8.00	.....
Jefferson—2 years, new, red, very productive, hardy and vigorous.....	8.00	.....
Lindley—(Rogers No. 9) Very large, one of Roger's best, lighter in color than Agawam; 2 years.....	3.50	.....
McPIKE—We have in this new wonderful black grape, great size, superior quality, hardy wood and bud, very large leathery leaves. Fruit ripens same season as Worden. This new grape ripens evenly and has only one and two seeds. Skin tender and pulp melting. 2 years.....	50.00	.....
“ 1 year.....	40.00	.....
Martha—White Concord, 2 years.....	4.00	.....
Perrimac—(Rogers No. 19) One of Rogers' best black grapes; 2 years.....	5.00	.....
Moore's Early—Bunch large, berry round, black, very early, ripens 10 days before Hartford Prolific, 2 years.....	5.00	40.00
Moore's Diamond—2 years, white, well known.....	4.00	.....
Ployer—A red grape from Canada; resembles the Delaware, but better and earlier; said to be three weeks earlier than Concord, very hardy; 2 years.....	5.00	.....
Niagara—Most popular white, 2 years.....	5.00	40.00
Norton's Virginia—Arbor and wine grape, 2 years.....	8.00	.....
Noah—2 years, white.....	8.00	.....
Perkins—White or bronze, 2 years.....	8.00	.....
Pocklington—Golden, very prolific; bunch very large; an excellent market variety; 2 years.....	5.00	40.00
Prentiss—White, 2 years.....	8.00	.....
Salem—(Rogers No. 53) Berry large, round, coppery red; bunch large and compact; one of the very best; hardy and productive; 2 years.....	4.00	.....
Vergennes—New, amber, hardy, vigorous, productive; 2 years.....	5.00	.....
Wildier—(Rogers No. 4) Black, an excellent market variety on account of its large size and beauty; ripens with Concord; hardy and productive; 2 years.....	6.00	.....
Worden—Better than Concord; 2 years.....	5.00	40.00
Wyoming Red—Best early red, double size of Delaware, ripens a week to 10 days in advance of Concord; 2 years.....	5.00	.....
Woodruff Red—Strong and vigorous grower, very large and handsome, hardy; 2 years.....	8.00	.....

## GARDEN ROOTS.

	100	1000
Asparagus—Columbian Mammoth White, 1 year.....	\$0.75	\$4.00
“ Conovers Colossal, 1 year.....	.50	3.00
“ “ “ 2 years.....	.75	3.50
“ Palmetto, 1 year.....	.75	4.00
Rhubarb—Pie or Vinegar Plant, strong roots, Linnæus.....	2.50	20.00
“ “ “ “ “ “ Victoria.....	2.50	.....
“ “ “ “ “ “ Seedlings, 1 year.....	1.00	9.00
Horseradish.....	2.00	.....


**STOCKS, HEDGE PLANTS, CUTTINGS, ETC.**

	100	1000	10,000
Apple Seedlings—1 year, first-class, 3-16 inch and up. Home grown	\$0.75	\$5.00	\$45.00
“ “ “ second-class, 2-16 to 3-16 inch “ “	.50	3.00	27.50
Cherry—Mahaleb, 1 year, 3-16 inch and up	.75	5.50	50.00
“ “ “ 2-16 to 3-16 inch	.50	3.50	32.50
“ “ “ 3rd class.	1.00	7.50	65.00
Pear—French, 1 year, first-class, 5-7 millimeters	1.00	7.50	65.00
“ “ “ second-class, 3-5 millimeters	.50	4.00	35.00
Berberry—Redfruited, transplanted, 12 to 18 inch	2.50	20.00	.....
“ “ “ 18 to 24 inch	4.00	.....	.....
Buckthorn—English; hardy hedge plant, 18 to 24 inch	3.00	.....	.....
Osage Orange Hedge Plant—1 year, first-class, packed	.....	2.00	15.00
Poplar—Cuttings; Abele, Balm of Gilead, Cottonwood, Lombardy	.....	2.00	.....
Honey Locust—2 years, strong	.75	5.00	.....

**ROOT GRAFTS—[Order Early.]**


 Largest Stock and Assortment.

**Our Season for Making Root Grafts Closes March 15.**

Root Grafts are Cions and Roots grafted and tied together, ready for planting in nursery rows. Orders for special lists of sorts  PLEASE SEND EARLY, with one-fourth cash with order, balance before shipment. This is very important to secure best grafts and your selection of sorts, as we take special pains in cutting and putting up cions for early orders. *Please don't forget this.* No extra charge for packing. Even 50's or 100's of each sort will be put up at the following prices. For smaller or broken lists, prices will be given on application.

**PRICES INCLUDE PACKING.**

	1000	10,000
Apple—Price of assortments	\$ 4.00	\$35.00
“ On whole roots. Price of assortments	5.50	50.00
Pear—On whole roots	10.00	.....
“ “ Rossney	20.00	.....
“ “ Longworth No. 1	12.00	.....

 We do not recommend the planting of Prune, Plum, and Cherry root grafts. They succeed best from buds.

**EVERGREENS.**

**All Nursery Grown, Transplanted, and Root Pruned.**

	10	100	1000
Arbor Vita—American or White Cedar	.....	.....	.....
“ 12 to 18 inches, transplanted	.....	\$ 5.00	\$40.00
“ 18 to 24 inches, “	.....	6.00	50.00
“ 2 to 3 feet, “	.....	8.00	.....
“ 3 to 4 feet, “	.....	10.00	.....
“ 4 to 6 feet, “	.....	12.00	.....
“ Compacta, 2 to 3 feet, transplanted	\$ 1.50	.....	.....
“ Orientalis, (Chinese), 12 to 18 inches, transplanted	1.00	.....	.....
“ Plicata, 9 to 12 inches, transplanted	.....	6.00	.....
“ “ 18 to 24 inches, transplanted	.....	8.00	.....
“ “ 2 to 3 feet, transplanted	.....	12.00	.....
“ “ 3 to 4 feet, very handsome, 18 to 24 inches across the top. Makes a most beautiful dwarf hedge or for single specimens	.....	20.00	.....
“ Pyramidal, 18 to 24 inches, transplanted	.....	15.00	.....
“ “ 2 to 3 feet, “	.....	20.00	.....
“ “ 3 to 4 feet, “	.....	25.00	.....
“ Siberian, 12 to 18 inches, “	.....	15.00	.....
“ “ 2 to 3 feet, “	.....	20.00	.....
“ Vervaeneana, (Variegated)	.....	.....	.....
“ “ 18 to 24 inches, transplanted	.....	15.00	.....
“ “ 2 to 3 feet, “	.....	20.00	.....
“ “ 3 to 4 feet, “	2.50	.....	.....
“ “ 4 to 6 feet, “	3.50	.....	.....
Balsam Fir—2 to 3 feet, transplanted	.....	15.00	120.00
Box Dwarf—For edging, 4 to 6 inches	.....	3.00	.....
Hemlock—2 to 3 feet, transplanted	.....	15.00	.....
Juniper—IRISH, hardy, 2 to 3 feet	.....	10.00	80.00
“ “ 3 to 4 feet } very fine... {	.....	12.00	100.00
“ “ 4 to 5 feet } {	.....	15.00	.....



## EVERGREENS—Continued.

	10	100	1000
Juniper—ENGLISH, 2 to 3 feet.....		\$20.00	.....
“ TRAILING OR PROSTRATE, hardy, beautiful for low clumps, border or rock work, 2 to 3 feet.....	\$ 2.50	.....	.....
“ SAVIN—2 to 3 feet.....		20.00	.....
“ “ 3 to 4 feet.....		25.00	.....
“ SWEDISH—2 to 3 feet.....	2.00	.....	.....
“ “ 3 to 4 feet } very beautiful... }	2.50	.....	.....
“ “ 4 to 5 feet }	3.00	.....	.....
Mahonia-Aquafolia—HOLLY, very beautiful, shining green leaves and red berries, 2 to 3 feet.....	2.00	.....	.....
Pine—AUSTRIAN, 3 to 4 feet, transplanted.....		9.00	.....
“ “ 4 to 6 feet, “.....		10.00	.....
“ SCOTCH, 3 to 4 feet, “.....		10.00	.....
“ “ 4 to 6 feet, “.....		12.00	.....
“ WHITE, 2 to 3 feet, “.....	2.00	.....	.....
Red Cedar—18 to 24 inches, “.....		12.00	.....
“ 2 to 3 feet, “.....		15.00	.....
“ 3 to 4 feet, “.....		20.00	.....
“ 5 to 6 feet, “.....		25.00	.....
Rhododendron—Grafted sorts, very fine plants.....	10.00	.....	.....
Spruce—AMERICAN, White, 3 to 4 feet, transplanted.....	1.50	.....	.....
“ “ 4 to 6 feet, “.....	2.00	.....	.....
“ NORWAY, 9 to 12 inches, transplanted, unusually large and fine stock.....	2.50	\$ 18.00	.....
“ “ 12 to 18 inches, “ “ “.....	4.00	25.00	.....
“ “ 18 to 24 inches, “ “ “.....	6.00	40.00	.....
“ “ 2 to 3 feet, “ “ “.....	8.00	70.00	.....
“ “ 3 to 4 feet, “ “ “.....	10.00	90.00	.....
“ “ 4 to 6 feet, “.....	1.50	.....	.....
“ COLORADO BLUE, 12 to 18 inches, transplanted.....	2.50	.....	.....

## ORNAMENTAL TREES.

All Nursery-grown. For planting and shipping we usually shorten in very small tops.

	10	100	1000
Ailanthus—3 to 4 feet, transplanted.....		\$ 5.00	.....
“ 4 to 5 feet, transplanted.....		7.00	.....
Ash—WHITE, 4 to 6 feet, transplanted.....		6.00	.....
“ “ 6 to 8 feet “.....		12.00	.....
“ “ 8 to 10 feet “.....		22.50	.....
“ “ 10 to 12 feet “.....		25.00	.....
“ “ 12 to 14 feet, 2¼ to 3 inch stems, transplanted.....		40.00	.....
“ BLACK, 6 to 8 feet, transplanted.....		15.00	.....
“ “ 10 to 12 feet “.....		30.00	.....
“ “ 14 to 16 feet “ 2½ inch stems.....		60.00	.....
“ BLUE 4 to 6 feet “.....	\$ 1.50	.....	.....
“ “ 6 to 8 feet “.....	2.00	.....	.....
Alder—EUROPEAN, 6 to 8 feet, transplanted.....		2.50	.....
Beech—PURPLE-LEAVED, 4 to 6 feet, transplanted.....		5.00	.....
“ AMERICAN, 5 to 6 feet, transplanted.....		20.00	.....
Birch—EUROPEAN WHITE, 5 to 6 feet, transplanted.....		35.00	.....
“ “ 8 to 10 feet, “.....		6.00	.....
Bird Cherry—EUROPEAN, 4 to 6 feet “.....		15.00	.....
Box Elder—See Maple, Ash-leaved.....		.....	.....
Buckeye—6 to 8 feet, transplanted.....		20.00	.....
Butternut—4 to 6 feet, transplanted.....		10.00	.....
“ 6 to 8 feet, “.....		15.00	.....
“ 8 to 10 feet, “.....		20.00	.....
“ 10 to 12 feet, 2 inch stems, transplanted.....	4.00	.....	.....
“ 12 to 14 feet, 3 inch stems, transplanted.....	6.00	.....	.....
Chestnut—AMERICAN SWEET, 5 to 6 feet, transplanted.....		20.00	.....
“ “ 12 to 14 feet, “ 2½ in. stem.....		50.00	.....
Catalpa—SPECIOSA, 1 year, 12 to 18 inches.....		.50	\$ 2.50
“ “ 6 to 8 feet, transplanted.....		8.00	.....
“ “ 8 to 10 feet, “.....		10.00	.....
“ “ 10 to 12 feet, “.....		15.00	.....
“ “ 12 to 14 feet, “.....		20.00	.....
“ “ 14 to 16 feet, “ 2½ to 3 inch stem.....		30.00	.....

## ORNAMENTAL TREES—Continued.

	10	100	1000
<b>Catalpa</b> —SPECIOSA, 16 to 18 feet, 3 to 4 in. stem, transplanted.....		\$60.00	
“ JAPAN, 1 year.....		.50	\$ 1.50
<b>Cottonwood</b> —4 to 6 feet, transplanted.....		8.00	
“ 6 to 8 feet, “.....		10.00	
“ 8 to 10 feet, “.....		12.00	
“ 10 to 12 feet, “.....		15.00	
<b>Cherry</b> —WILD BLACK, 4 to 6 feet, transplanted.....		3.00	20.00
“ “ “ 6 to 8 feet, “.....		4.00	30.00
“ “ “ 8 to 10 feet, “.....		5.00	35.00
<b>Elm</b> —WHITE, 4 to 6 feet, transplanted.....		10.00	
“ “ 6 to 8 feet, “.....		15.00	
“ “ 8 to 10 feet, “.....		20.00	
“ “ 10 to 12 feet, “.....		25.00	
“ “ 12 to 14 feet, “ 1½ to 2 inch stem.....		50.00	
“ “ 14 to 16 feet, “ 2 to 2½ inch stem.....	\$ 6.00		
“ “ 14 to 16 feet, “ 3 inch stem.....	10.00		
<b>English Walnut</b> —3 to 4 feet, transplanted.....		25.00	
<b>Hackberry</b> —NETTLE TREE, 5 to 6 feet.....		35.00	
<b>Hickory Shellbark</b> —3 to 4 feet, transplanted.....	2.50		
<b>Hop Tree</b> —Shrubby Trefoil, 3 to 4 feet, transplanted.....		5.00	
“ “ “ 4 to 6 feet, “.....		7.00	
“ “ “ 6 to 8 feet, “.....	2.00		
<b>Horse Chestnut</b> —5 to 3 feet, transplanted, stocky.....		30.00	
“ “ 6 to 8 feet, “.....		35.00	
<b>Judas Tree</b> —or RED BUD, 4 to 6 feet, transplanted.....		18.00	
<b>Juneberry</b> —DWARF—SHAD-BUSH, edible fruit, 2 to 3 feet, transplanted.....		5.00	
<b>Kentucky Coffee</b> —Hardy in Wisconsin, 3 to 4 ft. transplanted.....		12.00	
“ “ 4 to 6 feet, transplanted.....		15.00	
<b>Larch</b> —EUROPEAN, 6 to 8 feet, transplanted.....		12.00	
“ “ 8 to 10 feet, “.....		20.00	
<b>Linden</b> —AMERICAN, 8 to 10 feet, transplanted.....		25.00	
“ “ 10 to 12 feet, “.....		35.00	
“ “ 12 to 14 feet, “.....		40.00	
“ “ 14 to 16 feet, “ 2 to 2½ inch stem.....		50.00	
“ “ 16 to 18 feet, “ 2½ to 3 inch stem.....		60.00	
“ “ 18 to 20 feet, “ 4 inch stem.....		75.00	
“ “ Broad-leaved, 6 to 8 feet, transplanted.....	3.00		
“ “ Silver-leaved, 6 to 8 feet, “.....	3.00		
<b>Magnolia</b> —ACUMINATA, 3 to 4 feet, transplanted.....		25.00	
“ TRIPETELA, 2 to 3 feet, transplanted.....	2.00		
“ SOULANGEANA, 2 to 3 feet, transplanted.....	5.00		
<b>Maple</b> —ASH-LEAVED, Box Elder, 1 year, 6 to 12 inches.....			1.00
“ “ 4 to 6 feet, transplanted.....		8.00	
“ “ 6 to 8 feet, transplanted.....		15.00	
“ NORWAY, very desirable, 6 to 8 feet, transplanted.....		25.00	
“ “ “ 8 to 10 feet, “.....		35.00	
“ “ “ 10 to 12 feet, “.....	7.50		
“ SILVER-LEAVED, soft or white, 1 year, 12 to 18 inches.....		.50	1.50
“ “ 2 to 3 feet.....		.60	2.50
“ “ 3 to 4 feet.....		.75	3.50
“ “ 4 to 6 feet, transplanted.....		2.00	15.00
“ “ 6 to 8 feet, “.....		6.00	50.00
“ “ 8 to 10 feet, “.....		9.00	80.00
“ “ 10 to 12 feet, “ 1¼ to 1½ inch stem.....		15.00	125.00
“ “ 12 to 14 feet, “ 1½ to 2 inch stem.....		25.00	
“ “ 14 to 16 feet, “ 2 to 2½ inch stem.....	5.00		
“ SUGAR, 4 to 6 feet, transplanted.....		12.00	100.00
“ “ 6 to 8 feet, “.....		16.00	140.00
“ “ 8 to 10 feet, “.....		25.00	200.00
“ “ 10 to 12 feet, “.....		30.00	
“ “ 12 to 14 feet, “ 2 inch stem.....		40.00	
“ “ 14 to 16 feet, 2 to 2½ inch stems, transplanted.....		50.00	
“ SYCAMORE-LEAVED, 8 to 10 feet, transplanted.....		20.00	
“ “ 10 to 12 feet, “.....		25.00	
“ WIER'S CUT-LEAVED, 4 to 6 feet, transplanted.....		12.00	
“ “ “ 6 to 8 feet, “.....		15.00	
“ “ “ 8 to 10 feet, “.....		25.00	

## ORNAMENTAL TREES—Continued.

	10	100	1000
<b>Maple</b> —WIER'S CUT-LEAVED, 10 to 12 feet, transplanted.....		\$35.00	
“ “ “ 12 to 14 feet, 2 inch stems, transplanted.....	\$ 5.00		
<b>Mountain Ash</b> —OAK-LEAVED, 5 to 6 feet, transplanted...		20.00	
“ “ EUROPEAN, 5 to 6 feet, transplanted.....		15.00	
“ “ “ 6 to 8 feet, “.....		18.00	
“ “ “ 10 to 12 feet, “.....		20.00	
<b>Peach</b> —DOUBLE-FLOWERING, crimson and white, 2 to 3 feet.....		6.00	
“ “ “ “ “ 3 to 4 feet.....		8.00	
“ “ “ “ “ 4 to 6 feet.....	1.50		
<b>Pecan</b> —Native, hardy, most delicious nut, 3 to 4 feet, transplanted.....	3.00		
<b>Plum</b> —PRUNUS PISSARDI, purple leaved, very ornamental, 2 to 3 feet.....		6.00	
“ “ “ “ “ 3 to 4 feet.....		8.00	
<b>Poplar</b> —BALM OF GILEAD, 4 to 6 feet.....		4.00	
“ “ “ 6 to 8 feet.....		6.00	
“ “ “ 8 to 10 feet.....		8.00	
“ “ “ 10 to 12 feet.....		10.00	
“ LOMBARDY, 4 to 6 feet.....		4.00	
“ “ 6 to 8 feet.....		6.00	
“ “ 8 to 10 feet.....		8.00	
“ “ 10 to 12 feet.....		12.00	
“ “ 12 to 14 feet, 2½ inch stem.....		20.00	
“ “ 14 to 16 feet, 3 inch stems.....	3.50		
“ ASPEN-LEAVED, 10 to 12 feet.....		12.00	
“ “ 14 to 16 feet, 3 inch stems.....	3.50		
“ CAROLINA, 4 to 6 feet.....		4.00	\$ 35.00
“ “ 6 to 8 feet.....		6.00	50.00
“ “ 8 to 10 feet.....		10.00	90.00
“ “ 10 to 12 feet.....		12.00	
“ “ 12 to 14 feet, 2 inch stem.....		20.00	
“ “ 14 to 16 feet, 2 to 2½ inch stem.....		25.00	
“ “ 16 to 18 feet, 3 inch stem.....	5.00		
“ SILVER-LEAVED, 4 to 6 feet.....		5.00	
“ “ 6 to 8 feet.....		7.00	
“ “ 8 to 10 feet.....		10.00	
<b>Salisburia</b> —(Maiden Hair Tree or Ginkgo), 5 to 6 feet, transplanted.....		25.00	
“ “ “ “ “ 6 to 8 feet, “.....	3.00		
<b>Sycamore</b> —AMERICAN, (Buttonwood), 4 to 6 feet, transplanted.....		12.00	
“ “ “ 6 to 8 feet, “.....		15.00	
“ “ “ 8 to 10 feet “.....		20.00	
<b>Tulip Tree</b> —WHITE OR YELLOW POPLAR, 4 to 6 feet, trans., an extra fine stock.....		12.00	
“ “ “ 6 to 8 feet, “ “ “ “.....		18.00	150.00
“ “ “ 8 to 10 feet, “ “ “ “.....		20.00	
“ “ “ 10 to 12 feet, “ “ “ “.....		30.00	
“ “ “ 12 to 14 feet, “ 2 in. stem, “ “.....		40.00	
“ 2 to 2½ inch stems, transplanted, an extra fine stock.....	6.00		
“ 2½ to 3 “ “ “ “.....	10.00		
<b>Thorns</b> —PAUL'S SCARLET AND DOUBLE WHITE, 4 feet, transplanted.....	3.00		
<b>Virgilea Lutea</b> —Yellow Wood. White Flowers, 2 to 3 feet, “.....		15.00	
<b>Walnut</b> —Japan—Perfectly hardy, abundant bearer. Fruit superior to Black Walnut or Butternut, 2 to 3 feet.....		15.00	
<b>Willow</b> —GOLD-BARK, rapid, showy, 4 to 6 feet.....		5.00	
“ “ “ 6 to 8 feet.....		7.00	
“ “ “ 8 to 10 feet.....	1.50		
“ “ “ 10 to 12 feet.....	2.00		
“ “ “ 12 to 14 feet.....	2.50		
“ “ “ 3 to 4 inch stems, extra good stock.....	6.00		
“ LAUREL-LEAVED, beautiful, 4 to 6 feet.....		8.00	
“ “ 6 to 8 feet.....		12.00	
“ ROSEMARY-LEAVED, 2 to 3 feet.....		5.00	
“ TRIANDRA—Immense grower, 10 to 12 feet.....		10.00	
“ “ “ 12 to 14 feet.....		15.00	
“ WHITE OR GRAY, 4 to 6 feet.....		2.00	
“ “ 6 to 8 feet.....		3.00	
“ “ 8 to 10 feet.....		5.00	

## WEeping TREES.

	10	100
Ash—EUROPEAN WEEPING, strong.....	\$ 6.00	.....
Birch—CUT-LEAVED, WEEPING, 1 year, 2 to 3 feet .....	3.50	.....
“ “ “ 3 to 4 feet .....	6.00	.....
“ “ “ 4 to 5 feet .....	7.00	.....
“ “ “ 5 to 6 feet .....	8.00	.....
“ “ “ elegant, 6 to 8 feet .....	9.00	.....
Cherry—WEEPING, very ornamental.....	7.50	.....
Elm—CAMPERDOWN, very fine.....	6.00	.....
“ “ We have a few fine specimen trees, 6-inch stems, 15 feet across the tops. Price on application.		
Linden—WEEPING, WHITE-LEAVED, 6 to 8 feet. ....	7.50	.....
Mountain Ash—WEEPING, 2 year heads .....	4.00	.....
Mulberry—Teas Weeping, 2 year heads.....	5.00	.....
Willow—COMMON WEEPING, 4 to 6 feet.....	\$10.00	.....
“ “ “ 6 to 8 feet .....	1.50	.....
“ JAPAN GOLDEN, 3 feet.....	1.50	.....
“ KILMARNOCK WEEPING, very fine, 2 year heads.....	20.00	.....
“ WISCONSIN WEEPING, hardy in Wisconsin, 4 to 6 feet.....	10.00	.....
“ “ “ 6 to 8 feet.....	1.50	.....
“ NEW AMERICAN, 2 year heads.....	3.50	.....
“ ROSEMARY, 2 year heads.....	3.50	.....

## ORNAMENTAL SHRUBS.

	10	100
Acacia—ROSE OR MOSS LOCUST, 2 to 3 feet.....	\$ 2.00	.....
Almond—DWARF, double flowering, White and Pink, 18 to 24 inches .....	\$10.00	.....
“ “ “ “ 2 to 3 feet.....	15.00	.....
Althea—ROSE OF SHARON, assorted, named, double and single, 2 to 3 feet.....	8.00	.....
“ “ “ “ 3 to 4 feet.....	10.00	.....
“ VARIEGATED-LEAVED, 2 feet.....	1.50	.....
Berberry—PURPLE-LEAVED, beautiful, 2 to 3 feet .....	6.00	.....
“ RED-FRUITED, invaluable north for excellent tart fruit, ornament and hedge,		
“ “ 12 to 18 inches, transplanted.....	2.50	.....
“ “ 18 to 24 inches, “ .....	4.00	.....
“ “ 2 to 3 feet, “ .....	6.00	.....
“ “ 3 to 4 feet, “ .....	8.00	.....
“ “ 4 to 5 feet, “ .....	10.00	.....
“ THUNBERGII, 2 years, transplanted .....	5.00	.....
“ “ 3 years, “ .....	7.00	.....
Calycanthus—CAROLINA ALLSPICE, 2 to 3 feet, transplanted.....	7.00	.....
“ “ “ 3 to 4 feet, “ .....	9.00	.....
Chionanthus—OR WHITE FRINGE, beautiful, 2 to 3 feet.....	15.00	.....
“ 3 to 4 feet .....	20.00	.....
Cornus Sanguinea—WHITE-LEAVED, 18 to 24 inches.....	5.00	.....
“ Mascula—2 to 3 feet .....	8.00	.....
Currant—FRAGRANT MISSOURI, yellow flowering, 2 to 3 feet .....	8.00	.....
“ FLOREROSEA, double flowering, pink, 2 feet.....	10.00	.....
Daphne—MEZEREON, the earliest flowering shrub we have. Red, 18 to 24 inches .....	10.00	.....
Deutzia—CRENATA-LEAVED, single and double, hardy, strong, 2 to 3 feet.....	8.00	.....
“ CANDIDISSIMA, 2 to 3 feet.....	8.00	.....
“ FORTUNEI, 2 to 3 feet.....	8.00	.....
“ “ 4 to 5 feet.....	2.00	.....
“ GRACILIS, beautiful Dwarf, 12 to 15 inches .....	7.00	.....
“ “ “ MARGINATA AUREA, 12 inches.....	6.00	.....
“ PRIDE OF ROCHESTER, 18 to 24 inches.....	7.00	.....
“ “ 2 to 3 feet.....	8.00	.....
“ SCABRA, 4 to 5 feet.....	1.50	.....
“ VARIEGATED, 2 to 3 feet.....	8.00	.....
“ WATERERII, 2 to 3 feet.....	10.00	.....
Euonymous—STRAWBERRY TREE or BURNING BUSH, 2 varieties, American and European, 6 to 8 feet.....	8.00	.....
Elder—GOLDEN-LEAVED, beautiful foliage, 18 to 24 inches .....	8.00	.....
“ CUT-LEAVED, 18 to 24 inches .....	8.00	.....
“ DOUBLE-FLOWERING, 18 to 24 inches.....	8.00	.....



## ORNAMENTAL SHRUBS.—Continued.

	10	100
<b>Tamarix</b> —INDICA, dark green foliage, 2 feet.....		\$ 8.00
<b>Tree Pæony</b> —Assorted, 2 years.....	\$ 5.00	
<b>Tree Cranberry</b> —OR HIGH BUSH, 2 to 3 feet.....		10.00
<b>Weigelia</b> —ROSEA, CANDIDA, HORTENSIS RUBRA, CHAMELEON, DESBOISII, FLORA-BUNDA, VAN HOUTEI, 2 to 3 feet .....		10.00
“ VARIEGATED (dwarf) 2 to 3 feet.....		10.00
“ “ “ 3 to 4 feet.....		12.00
<b>Yucca</b> —FILAMENTOSA, 5 and 6 years, transplanted, very fine.....		4.00

## HARDY VINES AND CREEPERS.

If sent by mail add 10 cents to price for each to pay postage.

	10	100
<b>Akebia Quinata</b> —Hardy, climbing shrub, with fine foliage and dark purple flowers, 2 and 3 years, strong plants.....		\$10.00
<b>Ampelopsis</b> —VIRGINIA CREEPER or American Ivy, vigorous, beautiful, an extra fine stock, 2 years.....		4.00
“ VIRGINIA CREEPER, 4 years, extra good stock.....		5.00
“ VEITCHII, hardy, clinging to the smoothest surface; colors finely in autumn to a bright red; most beautiful climber—from 2 inch pots. . . . .		4.00
“ “ from 4-inch pots .....		8.00
<b>Aristolochia Sipo</b> —DUTCHMAN'S PIPE, strong, 2 years .....	\$3.00	
<b>Bignonia</b> —RADICAN'S GRANDIFLORA, TRUMPET CREEPER.....		8.00
<b>Celastrous or Staff Tree</b> —BITTER SWEET, 2 years .....		10.00
<b>Clematis</b> —See below.		
<b>Honeysuckle</b> —FRAGRANT MONTHLY, SCARLET TRUMPET AND HALLEYANA, strong plants, 2 years.....		7.00
“ JAPAN, gold-leaved, Aurea Reticulata, 2 years.....		7.00
<b>Periploca Graeca</b> —Silk vine, 2 years.....	1.50	
<b>Wistaria</b> —GLYCINE, AMERICAN, superb purple flowers, hardy, 2 and 3 years.....		8.00
“ SINENSIS, Chinese, blue, very strong grower, 2 years.....		12.00
“ FRUTESCENS, flowers pale blue in short clusters, 2 years.....		10.00

## CLEMATIS.

All Hardy. Home Grown. On own roots. An unusually fine stock.

	10	100
<b>Duchess of Edinburgh</b> —Double white, of vigorous habit, free bloomer, very fragrant, 2 years, strong plants from 4-inch pots .....		\$20.00
<b>Flamula</b> —Sweet scented. Produces large clusters of small white flowers. Most fragrant of all Clematis. Dormant, 2 years.....		10.00
<b>General Grant</b> —This excellent new Clematis originated in this city. It is supposed to be a hybrid of Velutina Purpurea and Gem. Growth very strong and vigorous. Very hardy. Large flowers of the Henryii type. Petals well rounded. Of the brightest velvety reddish purple, shaded with bright red. This is the first American Clematis, of extra fine merit, and undoubtedly new shades of color, in large flowering Clematis. It has been grown here for some years, and has proved to be unusually hardy and free blooming, 2 years; strong plants from 4 inch pots.....	\$ 3.00	
<b>Henryii</b> —New, and one of the best perpetual hybrids, of robust habit, and very free bloomer. The flowers are large, white, and very showy. 2 years; strong plants from 4 inch pots .....		25.00
<b>Jackmanii</b> —Deep violet purple, flowers produced in masses; one of the best, especially for bedding, 2 years; strong plants from 4 inch pots.....		20.00
“ Strong plants from 6 inch pots.....		30.00
<b>Jackmanii Alba</b> —Without exception this is the best hardy climbing plant that has been sent out for many years. It has all the characteristics of the Jackmanii, being free blooming and as vigorous. The flowers are nearly pure white, and make a fine contrast when planted near Jackmanii. It has been tested for years and has always won favor wherever shown. 2 years; strong plants from 4 inch pots.....		20.00
<b>Madam Baron Veillard</b> —The flowers are a satiny lavender pink. 2 years; strong plants from 4 inch pots.....		25.00
<b>Madam Edouard Andre</b> —A new French variety, entirely distinct and most novel. The nearest approach to a bright red yet produced. This Clematis was exhibited at the World's Fair, Chicago, in the French department, and attracted great attention, owing to the brilliancy of its flowers. The plant is a strong, vigorous grower, being a hybrid of the popular Jackmanii variety, which it resembles in freedom of bloom, strong, vigorous growth, shape and size of flowers. 2 years; strong plants from 4 inch pots....		20.00

**CLEMATIS.—Continued.**

	10	100
<b>Paniculata</b> —New. A strong, vigorous grower; very free flowering. Pure white. Unusually fragrant. 2 years. Dormant.....	10.00	<del>18.00</del>
<b>Ramona</b> —A strong, rampant grower and very hardy. Free and perpetual bloomer; flowers large, color, a deep sky blue; 2 years; strong plants from 4 inch pots.....	20.00	
<b>Star of India</b> —A very showy, very free flowering sort, with large flowers, first of a reddish plum color, changing to a violet purple, with turkey red bar in the center of each flower leaf. A distinct variety of great merit. July to October. 2 years.....	25.00	
<b>Virgin's Bower</b> —Common white flowering. 2 years. Dormant.....	10.00	
<b>Viticella</b> —Common purple. 2 years. Dormant.....	10.00	

# GREENHOUSE AND BEDDING PLANTS.

## ROSES, HARDY AND TENDER BULBS, ETC.

Thirty Thousand Square Feet Under Glass for plants and propagating purposes give us unusual facilities; so we can truly say our plants are in most splendid health and vigor, of the best size and shape for packing, and put up in the most approved manner for safe transit. They are usually sent by express, for which there are excellent facilities at this point.

Purchaser's selections gladly allowed, as far as practicable, without extra charge.

**50 AT 100 RATES. NOT LESS THAN 5 OF A VARIETY.**

**OUR ROSES** are all of our own growing on their own roots either from cuttings or layers. We cannot afford to fill orders for less than \$1.00 at the prices named herein.

### ROSES—Dormant.

	100	1000
<b>HYBRID PERPETUAL</b> —On own roots—Leading, hardy varieties; dormant; from the open ground; 2 years, strong.....	\$10.00	\$90.00
Achille Gounod, Emperor of Morocco, Mad. Francois Petit,		
Anna de Diesbach, Infant Mt. Carmel, Mad. Isaac Perreau,		
Anton Mouton, Francois Dubriuel, Mary Washington,		
Antoine Verdier, Fanny Petzold, Marquis Bocella,		
Augusta Mie, Gen. Jacqueminot, Magna Charta,		
Augustine Guinosseau, Gustave Pigareau, Mons. E. Y. Teas,		
Baron de Maynard, Hippolyte Barreau, Pæonia,		
Baron de Bonstettin, Jean Lelivere, Paul Neyron,		
Belle Normandy, Jean Liabaud, Pres. Carnot,		
Beauty of Waltham, Lady Helen Stewart, Prince Albert,		
Boule de Niege, La Reine, Prince Camille de Rohan,		
Caroline de Sousal, La France, Queen Victoria,		
Cheshunt Hybrid, Louis Odier, Reine Marie Henrietta,		
Coquette des Alpes, Madam Masson, Souv. de William Wood,		
Dinsmore, Madam Alfred Carriere, Souv. de Wooton,		
Duchess of Albany, Mad. Charles Wood, Vick's Caprice,		
Duchess de Mornay, Madam La Charme, William Chesbrough,		
Duke of Connaught, Madam E. Charin,		
	100	1000
<b>MOSS</b> —2 years, hardy varieties.....	\$ 8.00	\$75.00
Blanche Moreau, Luxembourg, Raphael,		
Countess de Murinais, Princess Adelaide, Red Moss,		
Crested, Perp. White Moss, Salet.		
<b>CLIMBING</b> —2 and 3 years, Anna Maria, Baltimore Bell, Prairie Queen, Russell's Cottage, and Seven Sisters. See also Rambler Roses, page 17.....	9.00	.....
<b>ENGLISH SWEET BRIAR</b> —Young branches and foliage very fragrant. Flowers single, bright pink. Desirable for hedges and garden planting, 3 years, 3 to 4 feet.....	8.00	.....
<b>HARDY YELLOW</b> —Persian yellow and Harrison yellow, 2 years.....	10.00	.....
<b>TREE ROSES</b> —Choice varieties, first-class.....	40.00	.....



**ROSES—From Pots.**

	100	1000
<b>HYBRID PERPETUAL</b> —On own roots, from 4 inch pots.....	\$10.00	\$90.00
“ “ “ “ from 2½ inch pots.....	5.00	.....
Achille Gounod,	Duchess of Mornay,	Mad. Francois Petit,
Anna de Diesbach,	Emperor of Morocco,	Mad. Isaac Perreau,
Alfred Colomb,	Empress of India,	Mary Washington,
Anton Mouton,	Fanny Petzold,	Marquis Bocella,
Augusta Mie,	Gen. Washington,	Marshall P. Wilder,
Baron de Maynard,	Gen. Jacqueminot,	Magna Charta,
Baron de Bonstettin,	Glory de Margottin,	Mrs. Forey,
Belle Normandy,	Gustave Pigareau,	Mrs. John Laing,
Black Prince,	Jean Lelivere,	Mons. E. Y. Teas,
Caroline de Sansal,	Jean Liabaud,	Pæonia,
Capt. Christy,	Jules Margottin,	Paul Neyron,
Cheshunt Hybrid,	Lady Helen Stewart,	Prince Camille de Rohan,
Coquette des Alps,	La Reine,	Reine Marie Henrietta,
Coquette des Blanches,	La France,	Souvenir de William Wood,
Countess of Roseberry,	Louis Odier,	Ulrich Bruner,
Dinsmore,	Madam Masson,	Victor Verdier,
Dr. Hovey,	Madam Alfred Carriere,	Vick's Caprice,
Duke of Connaught,	Madam Chas. Wood,	William Chesbrough,
Duchess de Caylus,	Madam La Charme,	

	100	1000
<b>MONTHLY</b> —Including Teas, China, Noisette, and Bourbon, on own roots, 2 years		
strong, from 4-inch pots.....	\$ 8.00	\$70.00
From 3-inch pots.....	5.00	.....
From 2½-inch pots.....	3.00	25.00

Bon Silene,	Madam Emilie Charin,	Princess Radziwell,
Bride,	Madam P. Labonnite,	Princess Sagan;
Bridesmaid,	Madam Pierre Guillot,	Queen's Scarlet,
Countess Riza du Parc,	Madam Phillipa Kuntz,	Rainbow,
Douglass,	Madam Schwartz,	Regulus,
Dr. Grill,	Maria Guillot,	Safrano,
Etoile de Lyon,	Marechal Neil,	Souvenir de Laurent Guillot,
Francois Dubrieul,	Mary Washington,	Sunset,
Hermosa,	Mosella,	The Queen,
Henry M. Stanley,	Mrs. DeGraw,	Washington,
Isabella Sprunt,	Niphetos,	W. A. Richardson,
Jennie Curvier,	Papa Gontier,	White Banksia.
Leonie Osterieth,	Pearl Rivers,	
Madam Claudia Perreau,	Perle des Jardin,	

	100	1000
<b>HYBRID TEA</b> —From 4-inch pots, on own roots.....	\$10.00	\$90.00
Souvenir de Wooten,	Antoine Verdier,	Madam C. Testout,
Madam Schwallers,	Meteor,	President Carnot,
La France,	Belle Siebrecht,	Maman Cochet.
Augustine Halem,	Viscountess Folkstone,	
Duchess of Albany,	Augustine Guinosseau,	

**RAMBLER ROSES.**

	100
<b>Crimson Rambler</b> —A grand new Rose from Japan. Dormant, 2 years.....	\$12.00
<b>Empress of China</b> —From 2½-inch pots.....	3.00
“ “ From 4-inch pots.....	10.00
<b>Yellow Rambler</b> —(Aglai.) From 2½-inch pots.....	3.00
“ “ “ From 4-inch pots.....	8.00

**HARDY HERBACEOUS FLOWERING PLANTS.**

The following assortment embraces the most desirable kinds and varieties, and in great demand for permanent planting. They are all showy, beautiful plants, of easy cultivation, and flower at different periods so that a succession of bloom will be obtained, from early in summer until after frosts in the fall. They do not have to be taken up in the fall, or replaced every spring, but remain in the ground for years. To obtain the best results they should be cultivated the same as other plants.

## HARDY HERBACEOUS FLOWERING PLANTS—Continued.

<b>Anemone Whirlwind</b> —A new, semi-double form of <i>Anemone Japonica Alba</i> , which is supposed to be a cross between this beautiful variety and a <i>Japonica Rosea</i> . In general style and habit it is identical with the white <i>Anemone</i> . It is of the same strong habit of growth, and is even more free-flowering than the original type. The flowers, which are 2¼ to 3 inches across, have several rows of pure white sepals, and the advantage of lasting much longer than the single varieties.....	10	100
<b>Achillea</b> —THE PEARL. Double, white.....		\$ 8.00
<b>Asclepias</b> —TUBEROSA. Butterfly flower, brilliant orange red.....		6.00
<b>Aster</b> —MICHAELMAS DAISIES. Assorted varieties. Indispensable for fall blooming.....		6.00
<b>Anthemis Tinctoria</b> —HARDY GOLDEN MARGUERITE; of dense, bushy habit, with large, golden yellow flowers.....	\$ 1.50	.....
<b>Aquilegia</b> —COLUMBINE, assorted.....		8.00
<b>Astilbe</b> —JAPONICA, SPIREA, June to August. Beautiful large spikes of pure white flowers and elegant foliage.....	1.50	.....
“ <b>COMPACTA MULTIFLORA</b> . This new variety, from 8 to 10 inches in height, produces larger and finer blossoms than the <i>Japonica</i> ; two weeks earlier.....	1.50	.....
<b>Cinnamon Vine</b> —Climbing, very handsome, rapid grower.....		3.00
<b>Campanula</b> —BELLFLOWER. Blue and white.....		7.00
<b>Coreopsis Lanceolata</b> —A hardy perennial that should be planted in every garden. The flowers are clear bright yellow, very attractive. A profuse bloomer and perfectly hardy. Thrives in almost any situation. Invaluable for summer cut flowers. Strong clumps, 2 years.....		8.00
<b>Delphinium</b> —FORMOSUM—Blue Larkspur. Clumps.....	1.50	.....
<b>Dielytra Spectabilis</b> —BLEEDING HEART. An excellent stock.....		7.00
<b>Dianthus</b> —HARDY PINKS, assorted. 2 and 3 years.....		8.00
<b>Digitalis</b> —PURPUREA. Fox Glove.....		6.00
<b>Euphorbia</b> —CORALLATA. Flowering Spurge, fine white.....		6.00
<b>Eulalia Japonica Variegata</b> —ORNAMENTAL GRASS. Leaves striped green and white.....		8.00
“ <b>Japonica Zebrina</b> —New zebra striped grass.....		8.00
“ <b>Gracillima Univitata</b> —Narrow green leaves with a silvery-white midrib.....		8.00
<b>Funkia</b> —DAY LILY, white, blue, and variegated.....		8.00
<b>Gaillardia</b> —MIXED—Large, Daisy-like flowers, single; fine long stem for summer bouquets..	1.50	.....
<b>Gypsophila</b> —PANICULATA. Smoke flower.....		8.00
<b>Helianthus Multiflorus</b> —Double, Dwarf, SUNFLOWER, dark, golden yellow color, grows from 3 to 5 feet in height. Never fails to flower the first season of planting. One of the hardiest and best herbaceous plants.....		8.00
“ <b>Maximilliam</b> —An elegant specie, the latest bloomer of its class, as well as one of the latest of all flowers. Clear yellow, from 3 to 5 inches across, with several rows of petals. Center full. Handsome in bud and flower. Height 8 feet.....		8.00
<b>Heliopsis</b> —PITCHERIANA. Very valuable for cut flowers, resembling Sun Flowers, but covering a longer season of bloom and earliest in summer. A new form with dwarf habit, giving a succession of deep orange yellow flowers, from June to October. 3 feet.....		8.00
<b>Heuchera</b> —SANGUINEA, Alum Root. One of the very few red flowering, hardy perennials. Flowers in graceful spikes. Very profuse.....		6.00
<b>Hemerocallis</b> —ORANGE DAY LILY. Clumps.....		4.00
<b>Hollyhock</b> —Double, white, yellow, pink, red, sulphur, and maroon, from open ground ...	1.50	.....
<b>Hibiscus</b> —CRIMSON EYE. The stems and wood are deep red, and foliage is beautifully veined. Flowers immense. Color a clear snow white, with a brilliant crimson eye.....		10.00
<b>Iris</b> —GERMANICA. German Iris, assorted.....		4.00
“ <b>KAEMPFERI</b> . Japan Iris, mixed.....		8.00
<b>Lathyrus</b> —ASSORTED—(Perennial Peas) Four sorts; free climbers, well adapted to growing on garden trellises, to cover walls, stumps, and trees, and with their constant blooms give striking results.....		8.00
“ <b>LATIFOLIUS</b> , (Perennial Pea.) Dense clusters of deep red flowers. Constant bloomer all summer. Fine for cutting.....		8.00
“ “ <b>ALBA</b> . Pure white flowers. One of the hardiest plants in cultivation, blooming from early June until hard frost, producing fine large blooms on good stems for cutting.....		12.00
<b>Liathrus</b> —SPICATA. Blazing Star. Deep purple flowers; June to August.....		6.00
<b>Lychnis</b> —CHALCEDONICA. Showy; dense heads of brightest crimson flowers; June to September.....		6.00
“ <b>HAAGEANA</b> . Broad heads of showy flowers, varying from orange red to richest crimson.....		6.00
<b>Lobelia</b> —CARDINALIS. Cardinal Flower. Long spikes of beautifully formed, deep, fiery, cardinal flowers; very effective.....		6.00



DONNELAN'S SEEDLING, double purplish rose; DELICATISSIMA, deep rose, very large and fine; DUCHESS DE NEMOURS, deep pink, violet shade; ETIENNE DENIS, rosy purple; ELEGANTISSIMA, blush with salmon shade; ELEGANS, lilac with blush; EDULIS SUPERBA, violet rose; FESTIVA MAXIMA, white, marked with carmine; GLOBOSA, rose and blush; GRANDIFLORA ROSEA, delicate blush, yellow center; GRANDIFLORA CARNEA, rose center, straw color; HUMELI, dark rose, large, very double; JOAN OF ARC, white tipped with carmine; LA COQUETTE, deep rose, tipped with salmon; PLENISSIMA VARIEGATA, deep rose; POMPONIA, purplish pink, center salmon; PAPAVERACEA, blush center, straw color; ROSEA PALLADA, rose; ROSEA ODORATA, deep rose, large and fragrant; SOEUR ROSALIE, deep rose, center white; STRIATA ELEGANS, pale rose, center crimson; VERSICOLOR SEMI-PLENO, deep rose; VICTORIA MODESTA, deep rose and pink; VICTORIA BI-COLOR, creamy white, pink center; ZOE VERNIORY, large, white, center yellow.

We also have a choice lot of paeonies, colors separate, red, white and pink. Price, strong roots, 2 and 3 eyes, per 100, \$10.00.

### TENDER BULBS AND TUBERS.

<b>Amaryllis</b> —EQUESTRE, pink, from 4-inch pots.....	10	100
“ FORMOSSISSIMA velvety crimson, from 3-inch pots.....		\$8.00
“ JOHNSONI, bright red, from 4-inch pots.....	\$2.00	....
<b>Agapanthus Umbellatum</b> —AFRICAN LILY, blue, from 4-inch pots.....	2.00	....
<b>Begonia Tuberosrooted</b> —single mixed colors.....		4.00
<b>Caladium Esculentum</b> —First-class bulbs; 7 to 9 inches.....		7.00
<b>Canna</b> —New dwarf flowering. See below.		
<b>Dahlias</b> —Assorted varieties, dry roots.....		8.00
<b>Gladiolus</b> —Mixed, all colors.....		3.00
“ colors separate.....		1.50
“ leading varieties named.....		10.00
<b>Hyacinthus Candicans</b> —Pure white, first-class bulbs.....		5.00
<b>Maderia Vine</b> —Strong bulbs.....		2.00
<b>Tuberose</b> —PEARL and DOUBLE, first-class bulbs. Home grown bulbs, well ripened, properly cured and certain to bloom. ....		1.00
<b>Zephyranthus</b> —CANDIDA, white.....		3.00

### CANNAS.

We offer the following choice collection of dwarf French Cannas which we consider among the best standard sorts offered. They are well started in 4-inch pots and will give entire satisfaction. Prices, except noted, per 100, \$8.00.

**Alphonse Bouvier**—Green foliage. Flower crimson, dark.

**Burbank**—The orchid-flowered; having clear, beautiful yellow flowers. The plant is a very strong grower, 5 to 6 feet high, with leaves with a texture like rubber. Excellent for planting in shady situations. Foliage green.

**Bassett's Red**—Darkest red flower and foliage.

**Chas. Henderson**—Crimson. Green foliage.

**Chicago**—The best to date, clear vermilion color; flowers and truss very large; foliage green; per 100, \$10.00.

**Egandale**—Currant red. Foliage red.

**Florence Vaughan**—Golden yellow, spotted red. Foliage green.

**Flamingo**—Finest scarlet bedder, foliage red.

**Gloriosa**—Green foliage. Red flowers with wide yellow border; per 10, \$1.00.

**Leonard Vaughan**—The best bronze-leaved variety; flowers bright scarlet; per 100, \$10.00.

**Madam Crozy**—Vermilion scarlet, bordered yellow. Foliage green.

**Miss Sarah Hill**—Crimson carmine. Green foliage.

**Paul Marquant**—Green foliage. Bright salmon scarlet.

**President McKinley**—Green foliage. Color a fiery deep crimson scarlet. One of the best. Price, per 10, \$1.00.

**Queen Charlotte**—Crimson scarlet, border gold. Foliage green. Per 100, \$10.00.

### HARDY LILIES.

<b>Lilium</b> —AURATUM, gold banded; strong bulbs.....	100	\$10.00
“ CANDIUM (Old White Lily) pure white, very fragrant.....		6.00
“ LANCIFOLIUM ALBUM, “ “ “ “.....		12.00
“ “ RUBRUM, blush with crimson spots.....		10.00
“ “ ROSEUM, rose spotted.....		10.00
“ LONGIFLORUM, pure white.....		8.00
“ TIGRINUM (Tiger Lily), orange red, spotted.....		5.00
“ “ SPLENDENS, later, larger, the plant taller. ....		8.00
“ “ FLORA PLENA, Double Flowering.....		5.00
“ UMBELLATUM, orange spotted.....		8.00
“ HARRISII (Bermuda Easter Lily) white, first-class bulbs.....		15.00
<b>Lily of the Valley</b> —CONVALARIA MAJALIS, choice, favorite, exquisitely fragrant, perfectly hardy. Pips, per 1,000, \$15.00.....		2.00

## NEW GERANIUM—E. H. Trego.

This is the best scarlet geranium yet produced. It was grown by careful hybridization from seed of Mrs. E. G. Hill, crossed by P. Crozy, by the noted florist, A. Shriver. We have tested this variety for the past four years and can truly say it is the largest flower and brightest scarlet geranium we have yet seen, and that it cannot be excelled for bedding purposes. The color is a deep scarlet of exquisite shade; the florets are regular in form, more than semi-double, and about two and a half inches in diameter. Trusses, enormously large on long stems. Foliage and habit are all that could be desired. It has also proved to be an excellent winter bloomer. We are the first to offer this magnificent sort to the public, and do so with the fullest confidence that every customer will be more than pleased. Price, from 2½-inch pots, \$1.25 per 10; \$10.00 per 100. From 4-inch pots \$1.75 per 10.

## GREENHOUSE AND BEDDING PLANTS.

Prices, except as noted, are for first-class plants of shipping sizes.

	10	100
<b>Abutilons</b> —6 sorts from 2½-inch pots.....	\$ .40	.....
“ <b>SOUV. DE BONN</b> —Variegated. From 2½-inch pots.....	.40	.....
<b>Acalypha</b> — <b>SANDERII</b> —New. The Chenille plant. From 4-inch pots.....	2.50	.....
“ <b>MARGINATA</b> . Foliage large, reddish brown, margin bright carmine. From 2½-inch pots.....	.50	.....
<b>Auracaria</b> — <b>EXCELSA</b> . From 6-inch pots, 4 to 5 tiers, 16 to 20 inches high.....	20.00	.....
<b>Ageratum</b> — <b>IMPERIAL</b> . A splendid strong growing bedding variety. Color, dark blue. Height 1½ to 2 feet. From 2½-inch pots.....		\$3.00
“ <b>PRINCESS PAULINE</b> . A most distinct and novel variety of dwarf; compact habit, rarely exceeding five inches in height, its peculiarity being that both colors, blue and white, are combined in the same flower; the body of the flower being white, while the stamens are of a light sky blue, giving the flower a pretty variegated appearance; one of the most distinct new bedding plants that has come under our observation this season. From 2¼-inch pots.....		3.00
“ <b>STELLA GURNEY</b> . This new <i>Ageratum</i> is a very short, compact grower, well branched. An extremely free bloomer. The individual tufts are very large and dense. The color is intense blue, the most beautiful ever seen in <i>Ageratum</i> . Continuous bloomer; unequalled as a bedding plant. From 2½-inch pots.....		3.00
<b>Alternanthera</b> —3 sorts, 2-inch pots. Price per 1000, \$25.00.....		3.00
<b>Alyssum</b> —Double dwarf, 2½-inch pots.....		3.00
<b>Acuba Japonica</b> —Japan Gold Dust Tree, 6-inch pots.....	1.50	.....
<b>Asparagus Tennissimus</b> —Graceful, fern-like climber. From 4-in. pots.....		10.00
“ <b>Plumosus</b> —From 4-inch pots.....	1.50	.....
“ <b>Sprengenii</b> —From 4-inch pots.....	1.50	.....
<b>Aspidistra Lurida</b> —Fine for window culture, 4-inch pots.....	2.50	.....
<b>Begonia</b> —We have an excellent stock of the following well-known flowering varieties: Alba Picta, Argyrostigma, Argentea Guttata, Cuprea, Erfordii, Glaucophylla Scandens, Ingramii, Manicata, Metalica, Nitida Rosea, Obia, Paul Bruant, President Caulain, President Carnot, Parvifolia, Rubra, Sandersonia, Sanguinea, Schmidtii, Semperflorens Alba, Semperflorens Rubra, Weltoniensis. From 2½ and 3-inch pots.....		6.00
From 4-inch pots.....		8.00
“ <b>REX</b> , in variety, from 3-inch pots.....	1.00	.....
“ <b>VERNON</b> , pink flowering, very profuse; fine for bedding.....		4.00
<b>Calla Ethopica</b> —(Lily of the Nile), very desirable, strong plants, 6-inch pots.....		15.00
“ “ From 4-inch pots.....		10.00
“ “ From 3-inch pots.....		6.00
<b>Cactus</b> — <b>CEREUS GRANIFLORA</b> —Night-blooming Cereus, 3-inch pots.....	1.00	.....
“ <b>EPIPHYLLUM TRUNCATUM</b> —(Crab Cactus), 3-inch pots.....	1.00	.....
“ <b>SPECIOSUM</b> , red, 3-inch pots.....	1.00	.....
<b>Canas</b> —(See page 20).		
<b>Coleus</b> —Choice selection, from 2 and 2½-inch pots, per 1000, \$25.00.....		3.00
<b>Cyperus Alternifolius</b> (Umbrella Plant)—Makes an excellent plant for house decoration or for growing in water. From 3-inch pots.....		6.00
“ “ From 4-inch pots.....		8.00

## GREENHOUSE AND BEDDING PLANTS—Continued.

	10	100
<b>Echeveria</b> —Secunda, Glauca. Foliage lively gray color. Used largely for bordering in parks. Resembles "Hen and Chickens," 2½ and 3-inch pots.....		\$ 6.00
<b>Feverfew</b> —Double white From 2½ inch pots.....		3.50
<b>Ferns</b> —Adiantum Capillus, Veneris, the true Maiden Hair Fern, strong plants from bed....		3.00
" Bostoniensis, or Boston Fern, from 4 inch pots.....		25.00
" " " " " 5 inch pots.....		35.00
<b>Geraniums</b> —DOUBLE, Acteon, American Wonder, Dr. Clenet, La Favorite, Miss Frances Perkins, Mary Geering, Richard Breett, Saint Saens, W. P. Simmons, White Swan. From 2½ inch pots.....		3.50
<b>Geraniums</b> —SINGLE. Athlete, Bryant, Evangeline, Gen. Grant, Margaret de Layner, Triumphant, Univers. Strong plants, from 2½-inch pots.....		3.00
" BRUANT TYPE. The finest for bedding. Madam Bruant, Beauty Poitevine, Mrs. E. G. Hill. 2½-inch pots.....		4.00
" " " " " New varieties. BELLEROPHON. One of the freest bloomers, single, soft scarlet, large florets, im'ense trusses. 2½-in. pots	\$ .75	.....
" " " " " THOMAS MEEHAN. Trusses as large as Hydrangeas, florets of fine circular form, a good grower and bloomer in any kind of weather. Color a brilliant pink, an entirely new and distinct color in Geraniums. 2½-inch pots.....	1.00	.....
" " " " " JEAN VIAUD. The best pink bedder yet produced. The flowers are large and semi-double. Color, exquisite light fresh rose, the upper petals marked with two beautiful white blotches. Habit and growth unsurpassed. 2½-inch pots.....	1.00	.....
" IVY-LEAVED. CHARLES TURNER, deep bright pink; JOAN D' ARC, white; CHAS. MONSELET, fiery red; GALILEE, light rosy pink, extra good. 2½-inch pots.....		5.00
" " " " " Assorted varieties. 2½-inch pots.....		4.00
" ROSE-SCENTED. 2½-inch pots.....		4.00
" E. H. TREGO. New scarlet. See page 21.		
<b>Heliotropes</b> —Assorted, from 2½-inch pots.....		4.00
" " " " " from 3½-inch pots.....		6.00
<b>Hibiscus</b> —CHINESE. Assorted, from 4-inch pots.....		8.00
<b>Hydrangea</b> —HORTENSIS AND OTASKA. From 2½-inch pots.....		5.00
" " " " " and THOS. HOGG. From 4-inch pots.....		10.00
" " " " " " " " From 6-inch pots.....		15.00
<b>Ivy</b> —ENGLISH. 2½-inch pots.....		4.00
" " " " " 4-inch pots.....		6.00
<b>Jasmine</b> —CATALONIAN. Pure white star-shaped flowers, 4-inch pots.....		8.00
<b>Lantana</b> —Red and white, from 2½-inch pots.....		4.00
<b>Lobelia</b> —Blue, from 2½-inch pots.....		3.00
<b>Marguerite</b> —WHITE AND YELLOW PARIS DAISY. 2½-inch pots.....		4.00
<b>Moon Flower</b> —From 2½-inch pots.....		4.00
<b>Orange Otaheite</b> —A dwarf orange, which bears a profusion of fragrant flowers and edible fruit. 6-inch pots.....		15.00
<b>Oleanders</b> —Red, White, and Pink, double. Well branched, 2 to 3 feet, 6-inch pots.....		15.00
" Double, Red, White, and Pink. From 3-inch pots.....		6.00
" Single Yellow. From 3-inch pots.....		10.00
" " " " " Well branched, 2 to 3 feet, 6-inch pots.....		20.00
" VARIEGATA. Finely variegated white and green foliage, distinct and handsome. Flowers single, pink. From 6-inch pots.....		20.00
" " " " " From 3-inch pots.....		8.00
<b>Palms</b> —KENTIA BELMOREANA, CYCAS REVOLUTA, PHOENIX RECLINATI, LATANIA BORBONICA, CHAMEROPS EXCELSA, SEAFORTHIA ELEGANS. Fine plants. From 6 to 8-inch pots, \$1.50 to \$4.00 each. We have larger sizes; prices on application.		
<b>Pansy</b> —Blooming plants, from cold frame, transplanted....		2.50
<b>Passiflora</b> —PASSION FLOWER, blue. From 2½-inch pots.....		5.00
<b>Petunia</b> —Fine double assorted. From 2½-inch pots.....		5.00
<b>Phlox</b> —See Hardy Herbaceous Plants.		
<b>Pyrethrum</b> —See, also, Herbaceous Plants.		
<b>Sanchesia</b> —NOBILIS. Very beautiful variegated foliage. From 4-inch pots.....		10.00
<b>Salvia</b> —ST. LOUIS (New). The finest Salvia yet produced. It is certainly without a rival. Beautiful flower spikes, fully 12 to 18 inches long and three inches in diameter. A very early bloomer, and continues to be one mass of scarlet flowers from June until frost. 2½-inch pots.....		4.00

**GREENHOUSE AND BEDDING PLANTS—Continued.**

	10	100
<b>Salvia</b> —WM. BEDMAN. An early flowering dwarf sort that seems to be almost a continuous bloomer. Brightest scarlet. A great addition to our list of bedding plants. 2½-inch pots .....		\$4.00
<b>Sansivera</b> —ZELANDICA. Very ornamental foliage plant. From 3 and 4-inch pots.....	\$ 1.50	
<b>Saxifraga</b> —STRAWBERRY GERANIUM. Fine hanging-basket plant .....		3.00
<b>Smilax</b> —Fine plants from 3-inch pots.....		6.00
<b>Stevia Serrata</b> —White, winter blooming. From 4-inch pots.....		6.00
"    " <b>VARIEGATA</b> . White and green foliage. An excellent plant for ribbon bedding. 2½-inch pots.....		3.00
<b>Solanum Jasminoides Grandiflora</b> —A beautiful plant of climbing habit, attaining a height of three to five feet, but can be grown in bush form. Its flowers are star-shaped and borne in clusters, large, pure white, with a violet tinge on back of petals and on the buds. In pots it is a continuous bloomer, both summer and winter; but its greatest value is for outdoor culture, trained against a wall or trellis. From 2½ inch pots. . . . .		4.00
<b>Swainsonia Galegifolia Alba</b> —A native of Australia; extremely graceful; trained at a window or on a trellis, presents a lovely sight; of light green foliage, and a splendid profusion of flowers resembling sweet peas in form. From 2½-inch pots.....		4.00
From 3-inch pots.....		6.00
From 4-inch pots.....		8.00
<b>Tritoma</b> —UVARIA GRANDIFLORA (Red Hot Poker) from open ground.....		6.00
<b>Valotta Purpurea</b> —A beautiful flowering, bulbous plant, adapted for pot culture, blooming in July and August. Spikes of brilliant scarlet, lily like flowers. Strong bulbs.....		6.00
<b>Vinca Rosea Alba</b> —A pretty shrubby plant, with white flowers and crimson eye. Perpetual summer bloomer. 2½ inch pots.....		5.00
"    "    Pink, with darker eye. 2½ inch pots .....		5.00
"    " <b>VARIEGATA MAJOR</b> . Variegated trailing vine. 2½ inch pots.....		5.00
<b>Verbenas</b> —A fine collection. From 2-inch pots, per 1000, \$25.00.....		3.00
<b>Violets</b> —DOUBLE MARIE LOUISE. We have a nice lot from 2¼-inch pots.....		4.00

**PLATE BOOKS.**

**COLORED PLATES OF FRUITS AND FLOWERS.**

Our stock is composed of hand-painted plates—new, handsome and showy and the best in the market. Size, 5½ by 9 inches, with printed description at bottom of each plate.

Price, 8 cents per plate, binding extra.

Plate books made promptly to order.

When bound in ordinary book form, with name and address printed on cover, a charge of \$1.00 made for binding.

When bound in folio form, and arranged so as to show six to twelve plates at once, making a beautiful and attractive combination of colors, a charge of \$1.50 is made for binding.

All books bound so that more plates can be added.

Bound books of plates generally on hand. Prices on application.

**List of Plates free on application.**

Can furnish lithograph plates of most varieties offered, at 5 cents per plate.

**NURSERYMEN'S REQUISITES.**

Articles not found in the following list will be priced on application.

<b>Box Clamp</b> —For packing tree boxes.....	\$ 7.00
<b>Dibbles</b> —Planting, each ..	1.00
<b>Diggers</b> —Western Tree Digger.....	30.00
<b>Hoes</b> —Each.....	.75
<b>Hoop Iron</b> —For strapping boxes—ready for use—per pound.....	.12
<b>Knives</b> —Grafting; common; postpaid, each.....	.50
"    Budding; each .....	.75
<b>Labels</b> —Judson's—Tree; pierced, 4-inch, wired, 15c per 100; 1,000, \$1.25; unwired, per 1,000 .....	.50
"    Pot; per 1,000 .....	.50
<b>Moss</b> —Per 100 lbs .....	1.00
<b>Oil Paper</b> —For mailing plants; per 100 sheets.....	2.00
<b>Order Book</b> —25 orders and 25 perforated duplicate sheets, postpaid, 25c each; per 10. ....	2.00
<b>Plates</b> —Colored. See Plate Department (above).	
<b>Shears</b> —Pruning; each.....	1.00
<b>Spades</b> —AMES', each, \$1.50; per dozen.....	15.00



**NURSERYMEN'S REQUISITES—Continued.**

Tags—Shipping; printed to order; size, 5 by 2¼; per 1,000.....	\$ 2.00
“ “ “ “ “ “ 6½ by 3¼; per 1,000.....	3.50
Trowels—Garden; each.....	.35
Thread—Grafting; per lb.....	.40
“ “ Waxed, ready for use, sufficient to wrap 20,000 grafts.....	2.00
Wax—Grafting; per lb.....	.45
Wire—Brass, for labels; per lb., cut ready for use.....	.60

**OFFICE OF THE ILLINOIS STATE ENTOMOLOGIST.**

Urbana, Ill., July 9, 1901.

This is to certify that the growing nursery stock and the premises of the Phoenix Nursery Company, situated at Bloomington, Ill., have been inspected according to the provisions of an Act to prevent the introduction and spread in Illinois of the San Jose Scale and other dangerous insects and contagious diseases of fruits, approved and in force April 11, 1899, and that no indications have been found of the presence of the San Jose Scale or other dangerous insect or plant disease. This certificate is invalid after June 1, 1902.

(Copy.)

S. A. FORBES, State Entomologist.



**SALVIA SAINT LOUIS.**

The finest Salvia yet produced. It is certainly without a rival. Beautiful flower spikes, fully 12 to 18 inches long and three inches in diameter. A very early bloomer, and continues to be one mass of scarlet flowers from June until frost. A large bed of this variety makes a grand show. Plants should be 2½ feet apart, and allowed full development. See page 22.